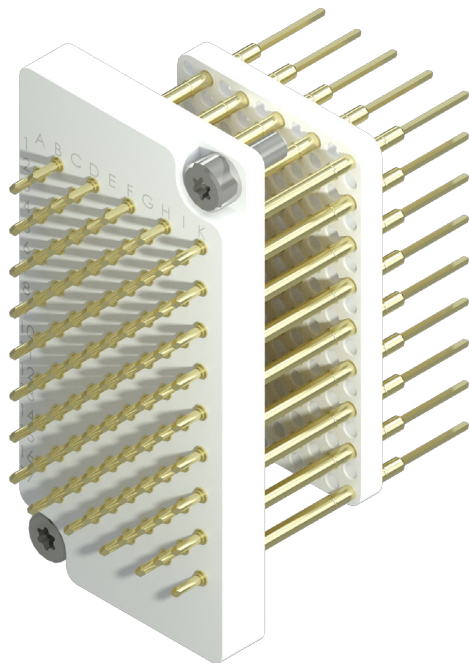


CB-S-P-085WW

Interface Block



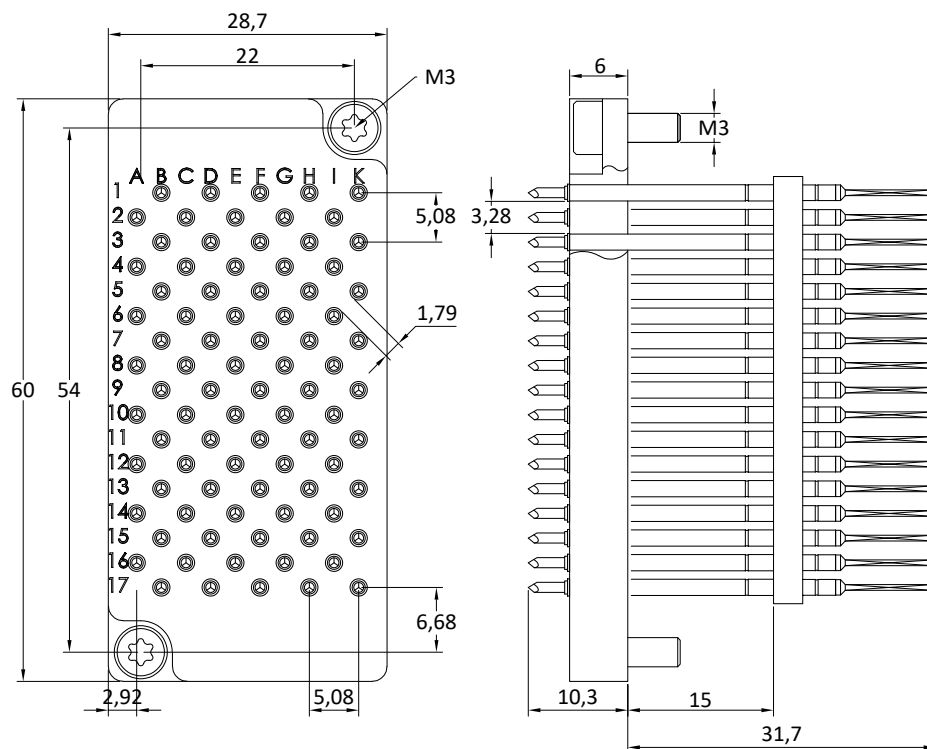
Technical Data

Working distance:	15,1 ±0,5 mm
Connection:	Wire-Wrap posts
Number of poles:	85
Probes working stroke :	2,6 mm
Air distance:	1,69 mm
Spring force:	93,5 N
Current rating:	4 A
Typical contact resistance:	<10 mΩ
Operating temperature range:	-30° up to +80°

Components specification: CP945T102B100G
CR945-W

Compatible with

Compatible mating part 1: CB-S-FT-085WW



Ordering example:

Pointe côté châssis				
Series	Type de contact	A wrapper		
CB-	S-	P-	085	WW
Block type		Nombre de contacts		
Signal				