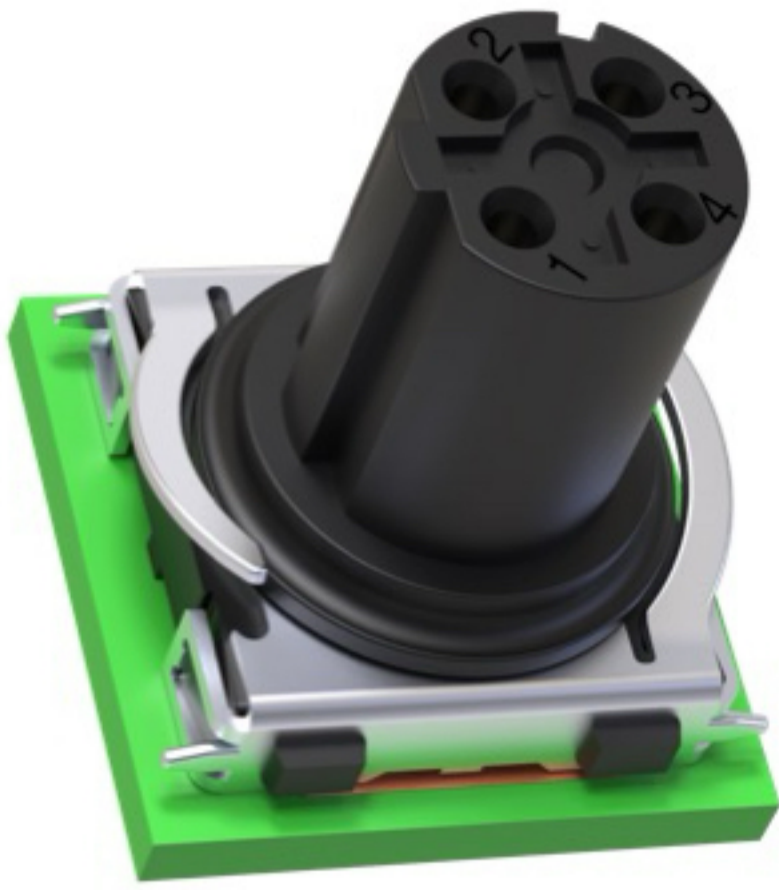


NEWS 2024/2025



Ruggedized M12 PCB connector in SMT shielded / unshielded straight

Robust design with low overall height



M12 codings available:

Male: A4, A5, B5, D4

Female: A4, A5, B5, D4, X8

(other codings on request)

- Miniaturization with only 16 mm height

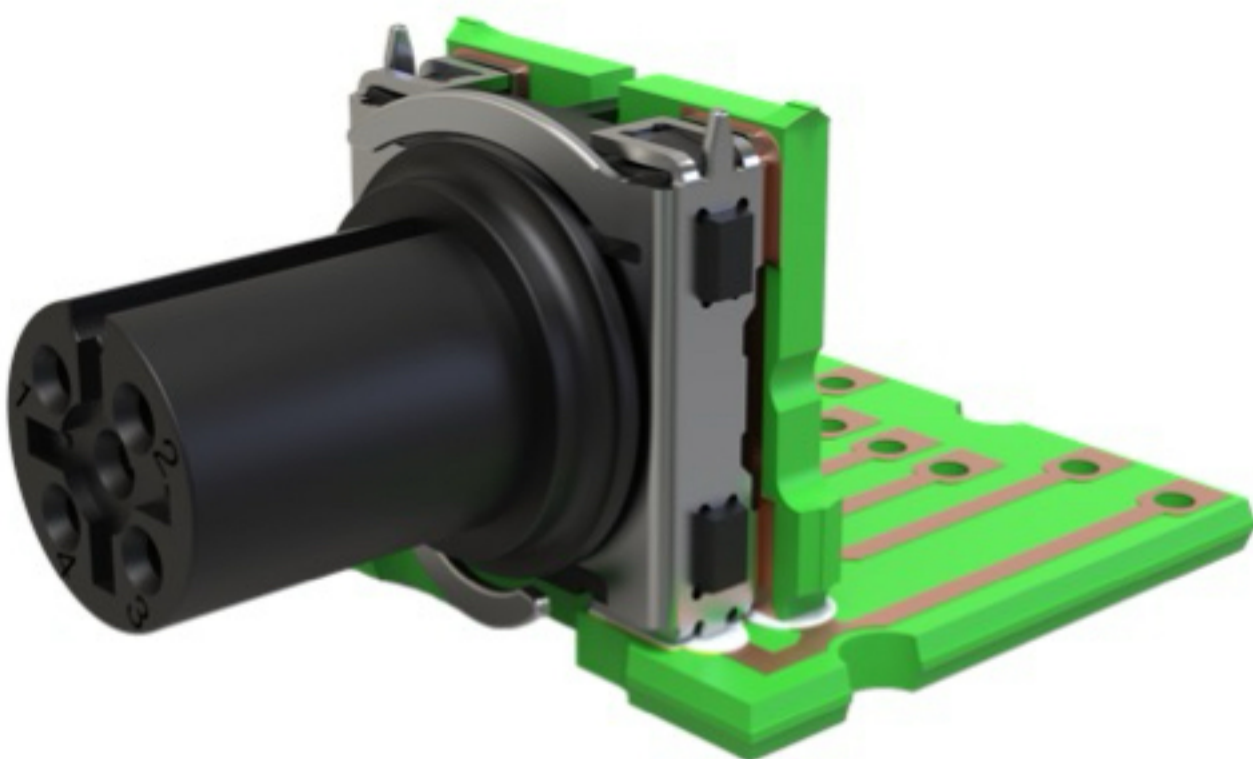
- Largest soldering surface for high torsion protection / torsional torque

- Optimized routing

SAFE and COMPACT thanks to robust solder joint connection and low overall height

Ruggedized M12 PCB connector in SMT shielded / unshielded 90°

Minimum space requirement on the PCB with RJ45-compatible dimensions



Minimum space requirement on the PCB

- 90° variant pre-assembled on PCB and then to be soldered to your PCB in a shock and vibration-proof manner

- All straight codings available in 90°

COMPACT due to minimum space requirement on the PCB

Slimline M12 PCB connector in SMT shielded / unshielded

Robust due to spring-elastic solder contact connection



M12 codings available:

Male: A4, A5, B5, D4

Female: A4, A5, B5, D4

(other codings and heights on request)

- Footprint compatible with commercially available circular connectors in SMT

Height:

- Socket: 17mm and 18mm;

- Male: 18.9mm ; 20.5mm and 21.4mm

- SMT connection technology with integrated shield plate

Drop-in replacement due to standard footprint

Slimline M8 PCB connector in SMT shielded / unshielded

Robust due to spring-elastic solder contact connection



M8 codings available:

Female: A3, A4, D4

(other codings, pin versions and other heights on request)

- Footprint compatible with commercially available circular connectors in SMT

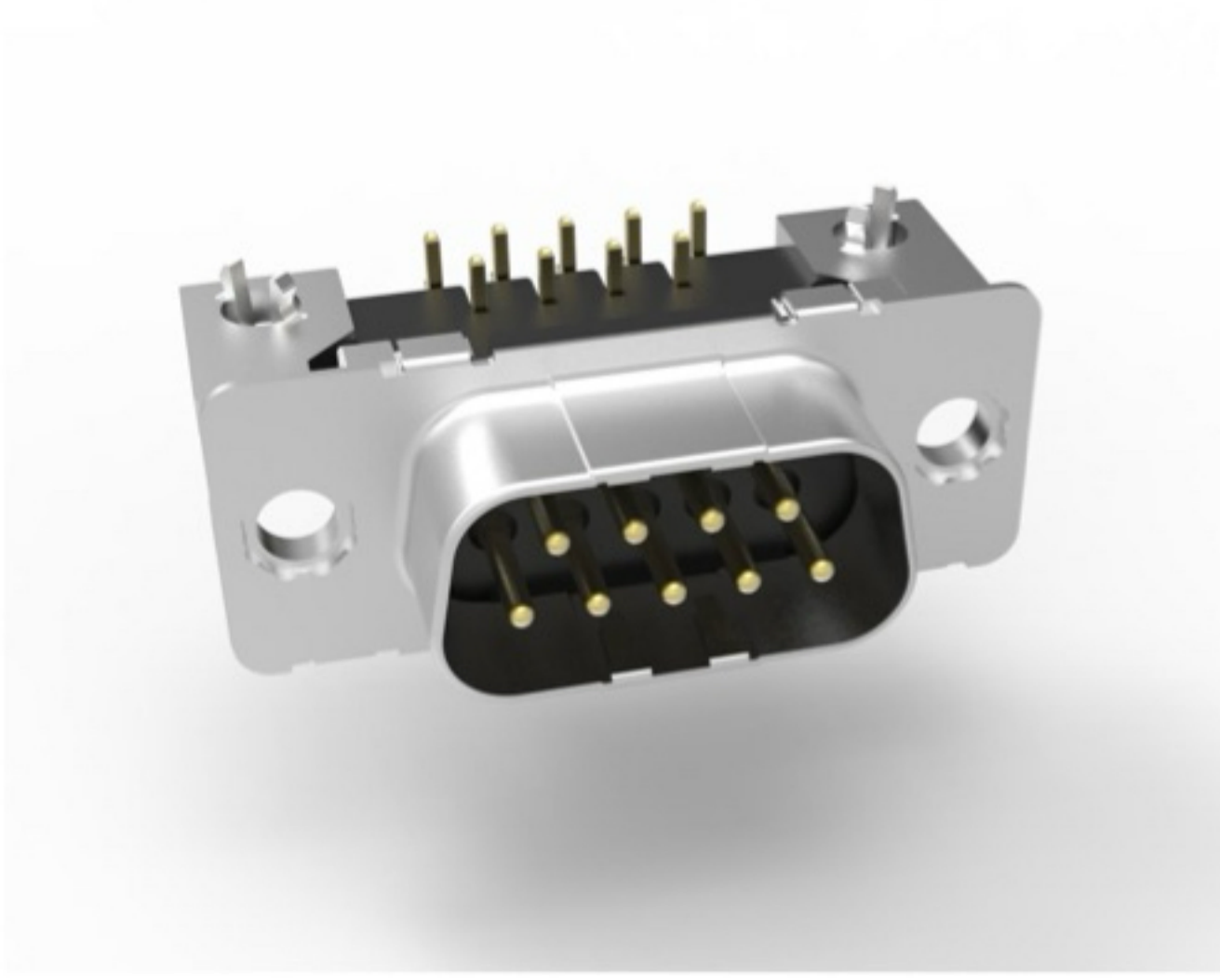
- Socket height: 17mm

- SMT connection technology with integrated shield

Drop-in replacement due to standard footprint

New D-Sub series Eurostyle (3.6mm)

Extremely robust due to solid metal bracket



Pole number versions available:

Male: 9, 15, 25

Female: 9, 15, 25

(other connection technologies and pole numbers on request)

- Compatible with commercially available D-Sub variants in 3.6 mm height
 - THT connection technology with solid ground angle with snap-in latch clip
 - Stamped contacts with double-sided spring contact
- Drop-in replacement due to standard footprint

M12 Ethernet panel feed-through adapter

Plug-and-Play Solution



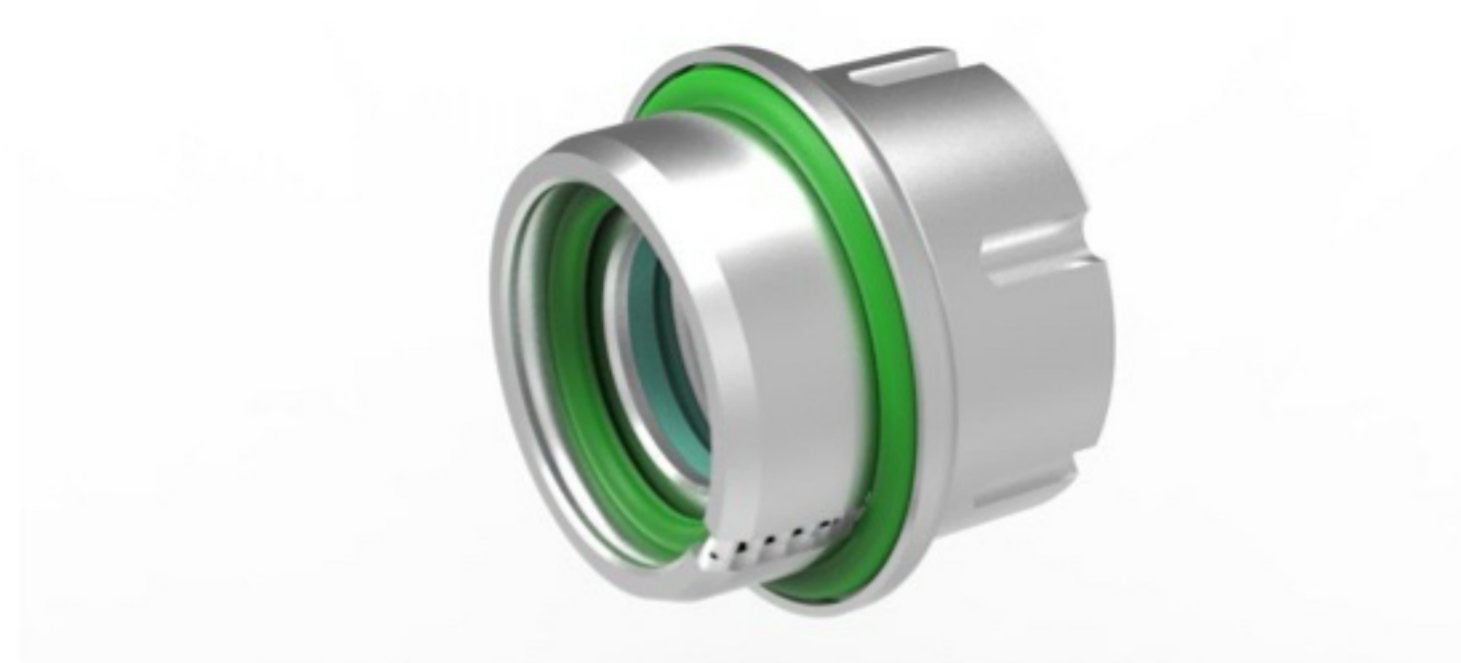
Pin count versions available: D-coded 4-pin male/female

- compact dimensions (SW19)
- effective shielding due to full metal housing
- Ideal for railway CCTV cameras

ROBUST and COMPACT due to minimal space requirement on the panel

Press-Fit M12 Installation housing for M12 SMT connectors

Assembled in seconds

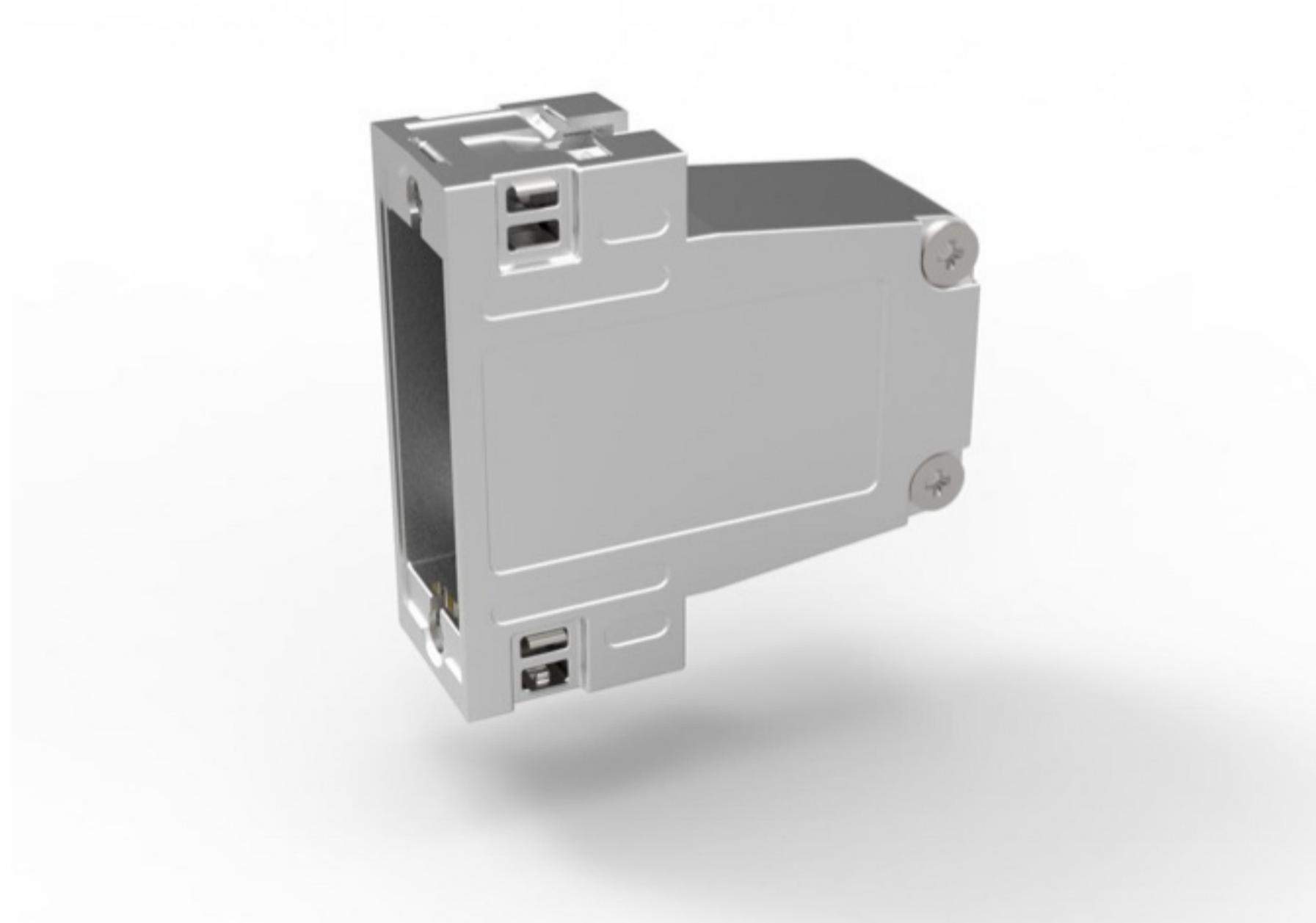


- All interfaces can be installed in one step
- Firm- and vibrationproof connection
- Tamperproof

Robust thanks to high tensile strength, very high retention forces and a compact design

FLEXLOCK® for spring Sliding locking

Space-saving solution with effective shielding



Number of poles available: 9, 15, 25

- Secure strain relief due to solid cable clamp
- Nickel-plated die-cast zinc housing
- Effective shielding due to full metal housing

FITTING YOUR APPLICATION - Suitable for every interlock

About us



Certificates

- For your safety
 - IATF 16949
 - ISO 9001
- For our environment our production locations are ISO 14001 certified
- UL-approvals



850 employees

- German-Hungarian company
- Production in Hungary
- Customer Service in Germany
- Satisfied customers



More than 40 years of experience

- Products for highest physical stability in extremely challenging networks
- Many innovations
- Customer-specific solutions

PROVERTHA[®]
CONNECTORS, CABLES & SOLUTIONS

**FITTING YOUR
APPLICATION**

Connectors, Cables & Solutions GmbH

Westring 9
75180 Pforzheim · Germany
Tel.: +49 7231 774 66
Fax: +49 7231 774 44
service@provertha.com
www.provertha.com

