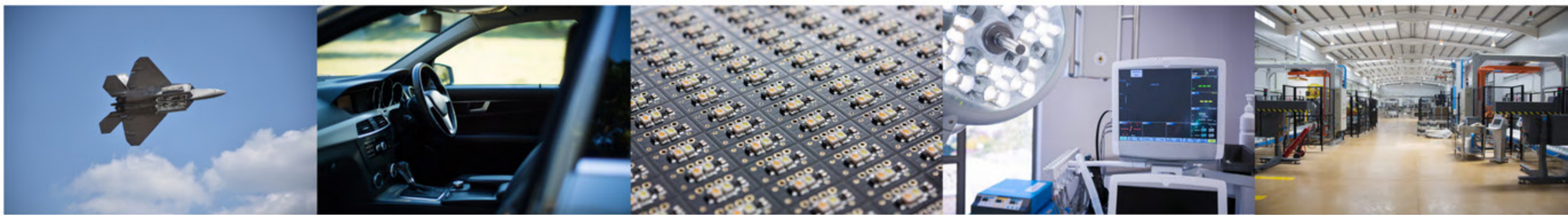


WORLD FAMOUS

Fancort's PCB Racks

Our Customers



Aerospace and Military

Automotive

Electronics

Medical

Industrial

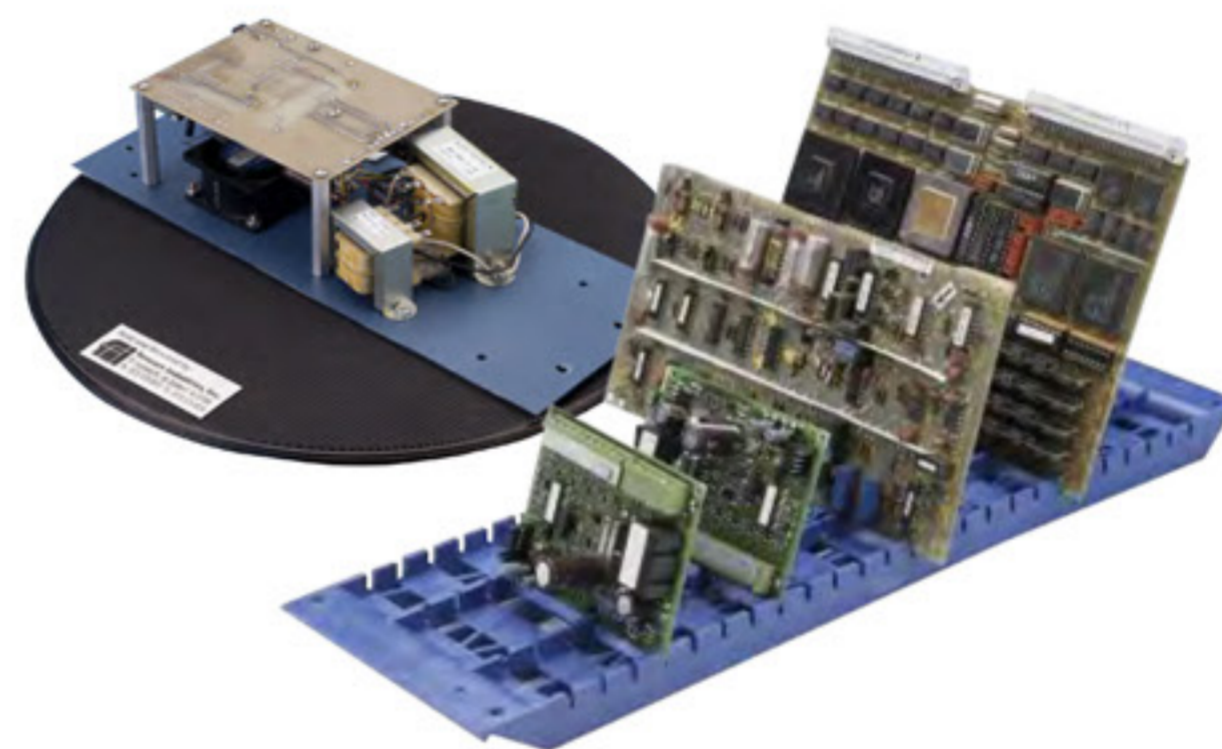
OVERVIEW: PCB Racks

PCB Assembly and Handling products, Fancort Industries will always be on TOP with Quality, Service, Precision and Multiple Solutions for the Industry.



Magazine Racks

premium materials such as aluminum, steel and engineering plastics for long lasting durability. Features injection-molded card guides to handle small, medium, large, very large and hard-to-hold boards for increased versatility.



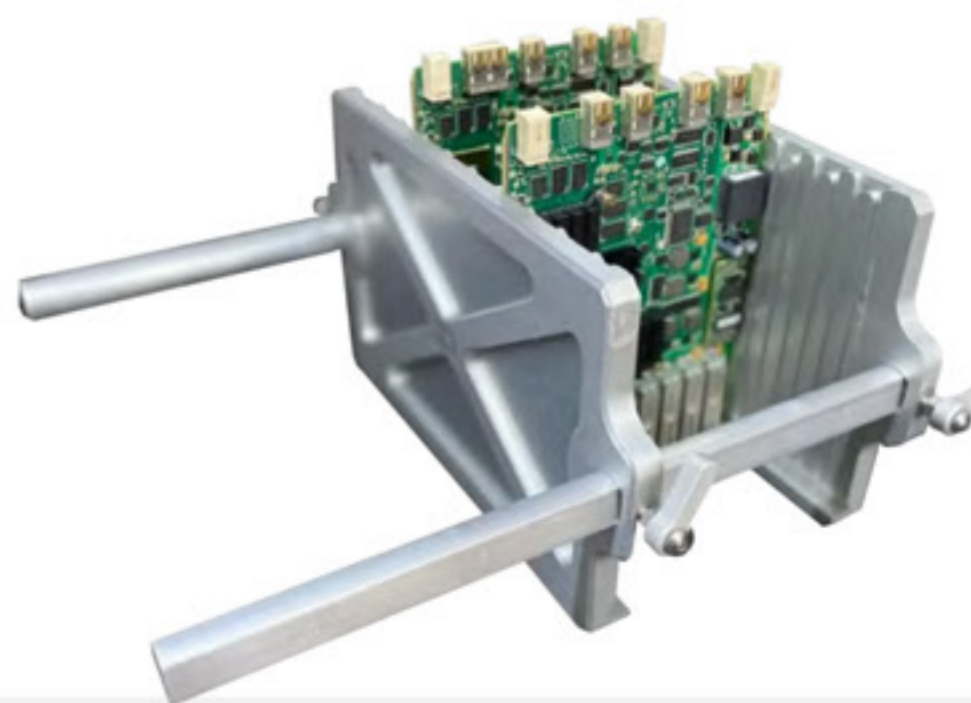
ESD-SAFE Universal Board Racks

Fancort ESD-Safe Universal Board Racks are designed for the secure storage and transportation of printed circuit boards. Fancort ESD-Safe Universal Board Racks are made of premium quality plastic for long lasting durability.



ESD Trays

Fancort ESD-Safe storage trays are designed for the secure storage and transportation of printed circuit boards and its components.



Custom Racks

We can design and customize these racks as your application demands. When your application demands: High temperature. High Accuracy Handling. Oversized PCB Boards. Heavy Duty Process.



Karry-All 76

Holding board capacity:
 39 boards from 8"-20" W | 6" - 10" D
 39 numbered slots
 0.135" W x 0.135" D on a 0.260" pitch.
 Easy board insertion with offset ribs.
 Thumb screws for tool-free adjustment.
 ESD SAFE

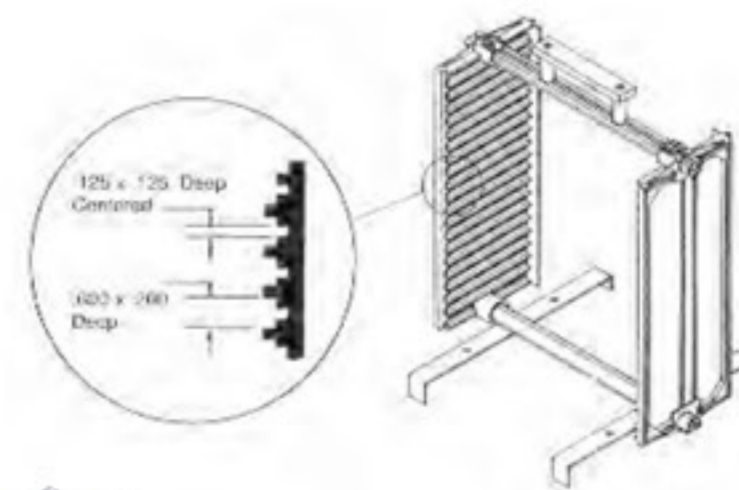
Add additional card guides to create multiple sections. Optional leg brackets for horizontal storage of 4" deep models. 8" deep models can be used horizontally without legs. Optional carrying handle.

fancort industries, inc.

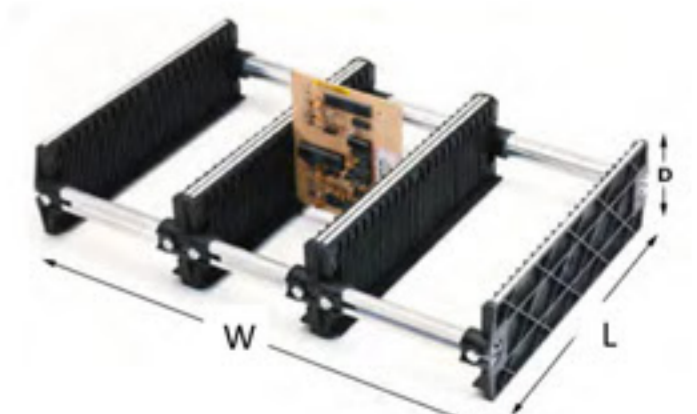
FEATURE	76-8-4CP	76-8-8CP	76-14-4CP	76-14-8CP	76-20-4CP	76-20-8CP
SINGLE WIDE	✓	✗	✓	✗	✓	✗
DOUBLE WIDE	✗	✓	✗	✓	✗	✓
ALUMINUM BACKPLATE	✗	✓	✗	✓	✗	✓
LEGS INCLUDED	✓	✓	✓	✓	✓	✓
HANDLE INCLUDED	✓	✓	✓	✓	✓	✓
ESD SAFE	✓	✓	✓	✓	✓	✓
MAX TEMPERATURE	200F	200F	200F	200F	200F	200F
STRUCTURE GUIDES	2	4	2	4	2	4
MAX PCB SIZE W" X D"	8" x 6"	8" x 10"	14" x 6"	14" x 10"	20" x 6"	20" x 10"
MIN PCB SIZE W" X D"	2" x 2"	2" x 2"	2" x 2"	2" x 2"	2" x 2"	2" x 2"
# SLOTS	39	39	39	39	39	39
OVERALL DIMENSIONS L" x W" x D"	13.25" x 9" x 4"	13.25" x 9" x 8"	13.25" x 15" x 4"	13.25" x 15" x 8"	13.25" x 21" x 4"	13.25" x 21" x 8"



Magazine Racks
 premium materials such as aluminum, steel and engineering plastics for long lasting durability. Features injection-molded card guides to handle small, medium, large, very large and hard-to-hold boards for increased versatility.



*Model displayed with carrying handles and leg brackets



*Model displayed with card guides



Karry-All 79

Max PCB Size: 8" x 8"

Overall Dimensions: 15.25" Length x 9" Width x 5.5" Depth
 18 Slots on a pitch of 0.700". Specially designed for hard to hold edges. Unique Double slots for boards with components on the edges. TYPE A) 0.125" W x 0.125" D TYPEB) 0.600"W x 0.200"D. Easy board insertion with offset ribs. Thumb screws for tool-free adjustment.

ESD SAFE

Additional card guides available to create multiple sections (Same Deep size, sections would be created in the width of the rack) This model needs aluminum legs for horizontal storage. Includes aluminum legs, carrying handle, plastic knobs for adjustment and aluminum structure.

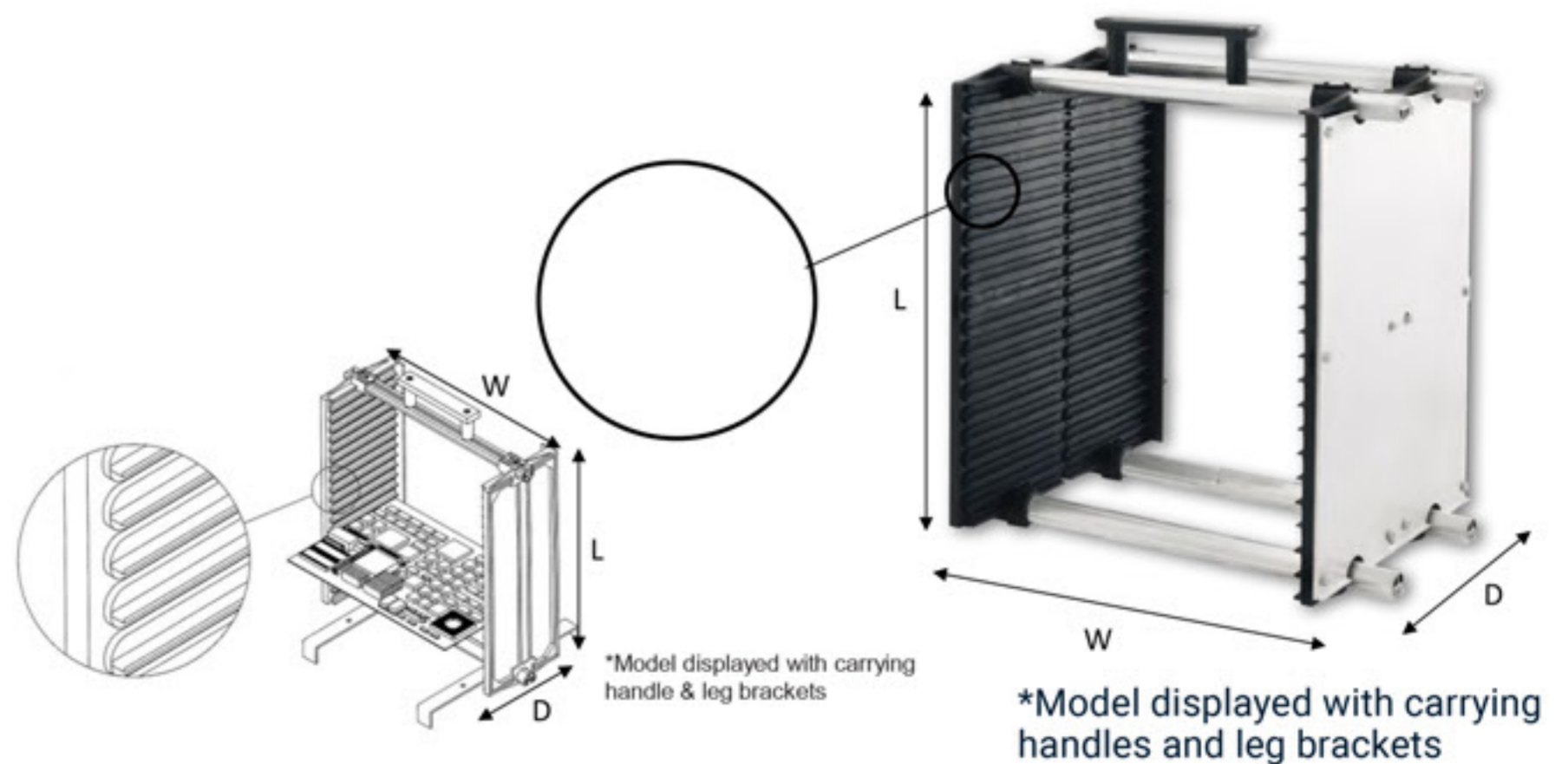
fancort industries, inc.

FEATURE	79-8-5CP	79-14-5CP	79-14-11CP	79-20-5CP	79-20-11CP	79-8-11CP
SINGLE WIDE	✓	✓	✗	✓	✗	✗
DOUBLE WIDE	✗	✗	✓	✗	✓	✓
ALUMINUM BACKPLATE	✗	✗	✓	✗	✓	✓
LEGS INCLUDED	✓	✓	✓	✓	✓	✓
HANDLE INCLUDED	✓	✓	✓	✓	✓	✓
ESD SAFE	✓	✓	✓	✓	✓	✓
MAX TEMPERATURE	200F	200F	200F	200F	200F	200F
# STRUCTURE GUIDES	2	2	4	2	4	4
MAX PCB SIZE W" X D"	8" x 8"	14" x 8"	14" x 15"	20" x 8"	20" x 15"	8" x 15"
MIN PCB SIZE W" X D"	2" x 2"	2" x 2"	2" x 2"	2" x 2"	2" x 2"	2" x 2"
# SLOTS	18	18	18	18	18	18
OVERALL DIMENSIONS L" x W" x D"	15.25" x 9" x 5.5"	15.25" x 15" x 5.5"	15.25" x 15" x 11"	15.25" x 21" x 5.5"	15.25" x 21" x 11"	15.25" x 9" x 11"



Model 79

Model 79-20B-5 fits a standard 17" x 21" tote box. Horizontal storage with optional leg brackets (KAL-2) for 5" deep model. 11" deep models need no brackets for horizontal storage. Optional carrying handle.





Karry-All 80

Max PCB Size: 12" x 12"
 Overall Dimensions: 18.75" x 14" x 12.5"
 75 numbered slots (0.110" W x 0.155" D on a 0.210" pitch).
 Easy board insertion with different offset ribs.
 Specially designed for hard to hold edges. Steel stiffeners
 and molded ribbing prevent flexing of card guides
 Fits many standard transport cards for horizontal transports

fancort industries, inc.

FEATURE	80-12-2	80-18-2	80-24-2
LEGS INCLUDED	✓	✓	✓
HANDLE INCLUDED	✓	✓	✓
ESD SAFE	✓	✓	✓
MAX TEMPERATURE	200F	200F	200F
TYPE OF STRUCTURE	Aluminum Extrusion	Aluminum Extrusion	Aluminum Extrusion
# STRUCTURE GUIDES	4	4	4
TYPE OF ADJUSTMENT	Manual	Manual	Manual
MAX PCB SIZE W" X D"	12" x 12"	18" x 12"	24" x 12"
MIN PCB SIZE W" X D"	2" x 2"	2" x 2"	2" x 2"
# SLOTS	75	75	75
OVERALL DIMENSIONS L" x W" x D"	18.75" x 14" x 12.5"	18.75" x 20" x 12.5"	18.75" x 24" x 12.5"



Model 80

The standard Karry-Alls can tolerate solvents and temperatures to 200°F. PCB Magazine Rack is made of volume conductive polypropylene and aluminum Universal adjustable model, designed for the manufacture, assembly, storage and transport of PCB Boards

*Model displayed with carrying handles and leg brackets





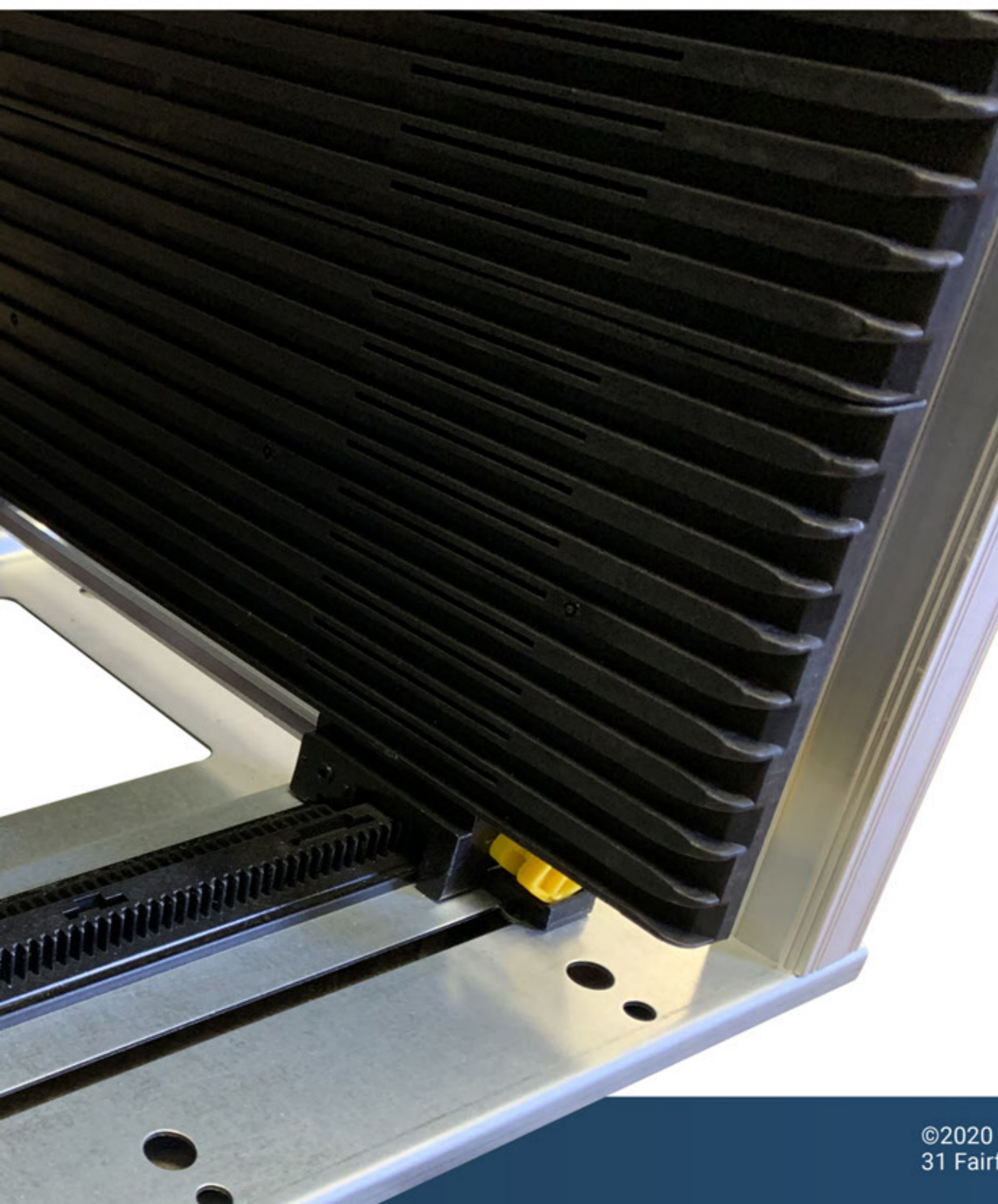
BG Series

ESD SAFE. Transport Dolly available.
ESD materials. One touch setup.
Works with inline automation
equipment. Monitor Parallelism
system. Most Popular model

Gear adjusting card guides on some models to monitor parallelism and simplify set-up. Metal top and bottom Zero flexing of card guides with steel reinforcing supports and molded ribs. Standard model (N) tolerates 200 F Surface resistivity of 10-4 to 10-6 ohm/cm. Removable end stop. Slot size is 5mm (.196"). Carrying handles on top and bottom. Assembly Instructions included

fancort industries, inc.

FEATURE	B0103GN	B0103GM	B0104N	B0105GPN	B0106GN	B0106GM	B0108GN	B0109GN	B0111
STACKABLE	✓	✓	✓	✓	✓	✓	✓	✓	✓
CARRYING HANDLE	✓	✓	✓	✓	✓	✓	✓	✓	✓
ADJUSTABLE WIDTH	✓	✓	✓	✓	✓	✓	✓	✓	✓
INLINE AUTOMATION READY	✓	✓	✓	✓	✓	✓	✓	✓	✓
ESD SAFE	✓	✓	✓	✓	✓	✓	✓	✓	✓
GEAR ADJUSTMENT	✓	✓	✗	✓	✓	✓	✓	✓	✗
ONE TOUCH SETUP	✓	✓	✗	✓	✓	✓	✓	✓	✗
MONITOR PARALLEL MECHANISM	✓	✓	✗	✓	✓	✓	✓	✓	✗
WIDTH ADJUSTMENT TYPE	Gear	Gear	Screw	Gear	Gear	Gear	Gear	Gear	Screw
TOP & BOTTOM MATERIAL	Metal	Metal	Metal	Plastic	Metal	Metal	Metal	Metal	Metal
MAX TEMPERATURE	200°F = 93°C	392°F = 200°C	200°F = 93°C	200°F = 93°C	200°F = 93°C	392°F = 200°C	200°F = 93°C	200°F = 93°C	200°F = 93°C
MAX PCB SIZE W mm x D mm	250 x 350	250 x 350	250 x 350	250 x 350	330 x 455	330 x 455	390 x 530	460 x 530	450 x 630
MIN PCB SIZE W mm x D mm	50 x 50	50 x 50	50 x 50	50 x 50	100 x 50	100 x 50	50 x 50	120 x 50	50 x 50
# SLOTS	50	50	50	50	50	50	50	50	50
OVERALL DIMENSIONS L mm x W mm x H mm	320 x 355 x 563	320 x 355 x 563	320 x 355 x 563	320 x 355 x 563	400 x 460 x 563	400 x 460 x 563	460 x 535 x 570	530 x 535 x 570	530 x 630 x 569
Ref Position (Bottom/Fixed Rail)	34mm	34mm	34mm	34mm	34mm	34mm	34mm	34mm	34mm



BG Series
Universal adjustable model, designed for the manufacture, assembly, storage and transport of PCB Boards. PCB Magazine Rack is made of volume conductive polypropylene and metal BG Series Adjustable Magazine Racks are for use with in-line automation.





RA-14

Designed for boards that require a large full slot. Supports High Temperature. Tolerates most chemicals and (350°F). Molded-in Phenolic. Measures 14" x 6" with 25 slots that measure .180" W x .333" D on a .500" pitch; weighs 1.7 lbs. Designed for baking and chemical resistance.



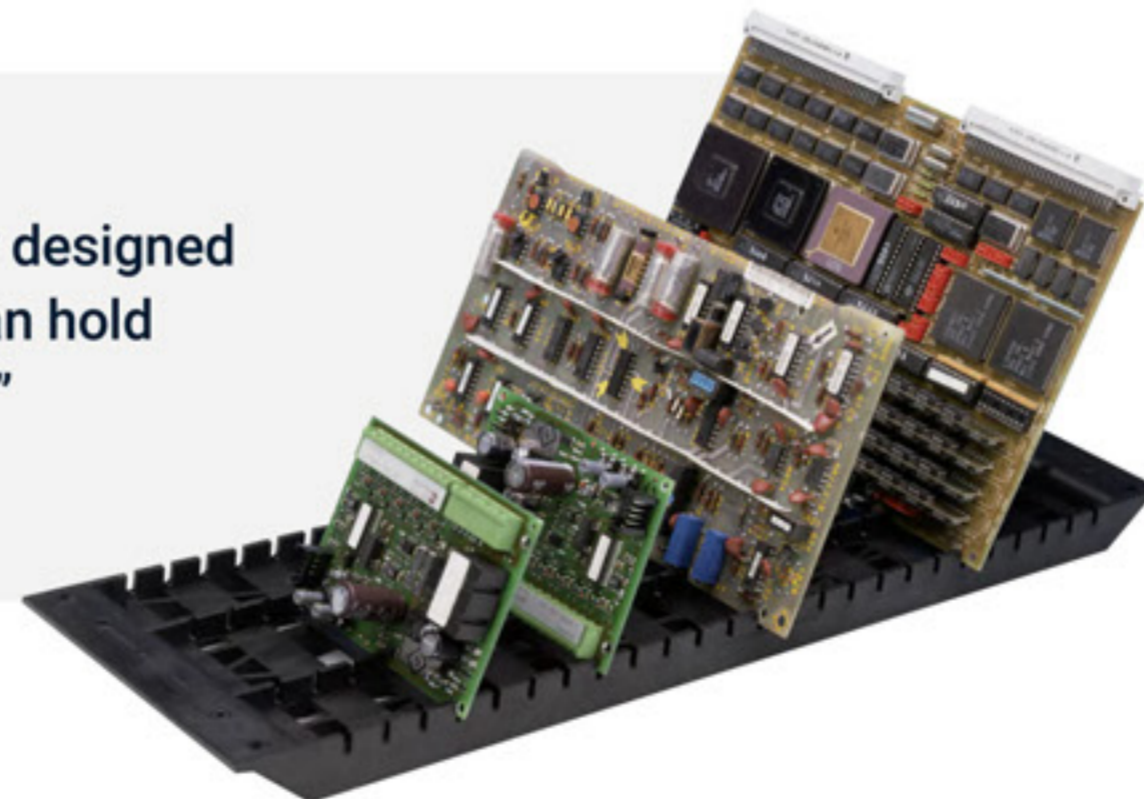
RA-14 Double Wide

Designed for boards that require a large full slot with perfect alignment. Supports High Temperature. Tolerates most chemicals and (350°F). Molded-in Phenolic Measures 14" x 14" with 25 slots that measure .180" W x .333" D on a .500" pitch; weighs 3.9 lbs. Undercut ends for carrying and drainage holes. Designed for baking and chemical resistance.



FEATURE	RA-14	RA-18	RA-20	RA-24	ANGLE MODEL	TURNTABLE
STACKABLE	✓	✓	✓	✓	✓	✗
ONLINE DISCOUNT AVAILABLE	✓	✓	✓	✓	✓	✓
WORKS PCB STORAGE	✓	✓	✓	✓	✓	✗
CARRYING HANDLE	✓	✓	✓	✓	✓	✗
CUSTOMIZABLE	✓	✓	✓	✓	✓	✗
ESD SAFE	✗	✓	✓	✓	✓	✓
TURNTABLE	✗	✗	✗	✗	✗	✓
HEAVY DUTY WORK	✓	✗	✓	✓	✗	✓
DOUBLE WIDE AVAILABLE	✓	✓	✗	✗	✓	✗
CLEAN ROOM AVAILABLE	✗	✓	✗	✗	✗	✗
MAX TEMPERATURE	350F	275F	185F	220F	185F	185F
MAX PCB SIZE (W")	Single Wide 8" Double Wide 16"	Single Wide 8" Double Wide 16"	Single Wide 9"	Single Wide 12"	Single Wide 8" Double Wide 16"	Single Wide 20"
MIN PCB SIZE	Single Wide 2"	Single Wide 2"	Single Wide 2"	Single Wide 3"	Single Wide 1"	Single Wide 1"
AMOUNT OF SLOTS	25 SLOTS	25 SLOTS	20 SLOTS	20 SLOTS	25 SLOTS	✗
AVAILABLE COLORS	●	● ● ●	●	●	●	●

The rack is light, economical, yet ruggedly designed with cross ribbing to maintain flatness. Can hold boards with components as close as .150" from the edges



RA-18C

Dimensions 6" x 18", weights 0.5 lb. 25 slots with parallel sides for more rigid holding, 0.125" x 0.300 on a 0.625" pitch. For bare board processing tolerates acids, alkaline and solvents. Black Standard Conductive (185°F) ESD-SAFE



RA-18CT

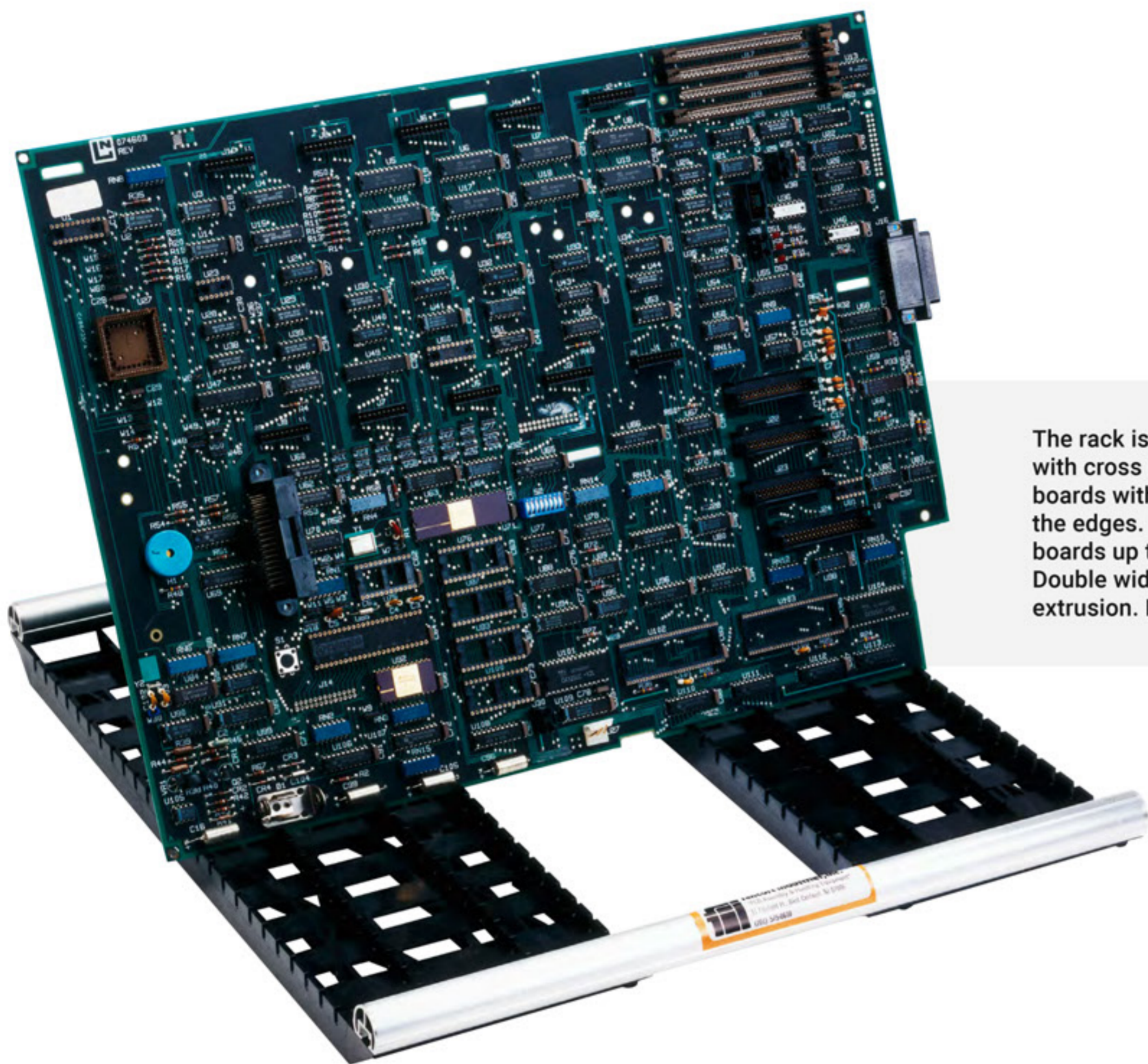
Dimensions 6" x 18", weights 0.5 lb. 25 slots with parallel sides for more rigid holding, 0.125" x 0.300 on a 0.625" pitch. High temperature conductive model for bare board processing tolerates acids, alkaline and solvents. Black High Temp Conductive (275°F) ESD-SAFE



RA-18HT

Dimensions 6" x 18", weights 0.5 lb. 25 slots with parallel sides for more rigid holding, 0.125" x 0.300 on a 0.625" pitch. High temperature conductive model for bare board processing tolerates acids, alkaline and solvents. Black Very High Temp Polysulfone (275°F) Non-ESD





The rack is light, economical, yet ruggedly designed with cross ribbing to maintain flatness. Can hold boards with components as close as .150" from the edges. Double wide models expand to hold boards up to 24" wide with a carrying handle. Double wide structure made of aluminum extrusion. Finish: Natural Anodize

RA-18CTD

Dimensions 18" x 18", weights 1.5 lb. 25 slots with parallel sides for more rigid holding, 0.125" x 0.300 on a 0.625" pitch. High temperature conductive model for bare board processing tolerates acids, alkaline and solvents. Black Double Wide Conductive High Temp (275°F) ESD-SAFE



RA-18HTD

Dimensions 18" x 18", weights 1.5 lb. 25 slots with parallel sides for more rigid holding, 0.125" x 0.300 on a 0.625" pitch. High temperature conductive model for bare board processing tolerates acids, alkaline and solvents. Black Double Wide, non-conductive. Very High Temp (275°F)



RA-18CD

Dimensions 18" x 18", weights 1.5 lb. 25 slots with parallel sides for more rigid holding, 0.125" x 0.300 on a 0.625" pitch. Standard temperature conductive model for bare board processing tolerates acids, alkaline and solvents. Double Wide/ Standard Temperature ESD-Safe (185°F) ESD-SAFE



FEATURE	RA-18C	RA-18CT	RA-18HT	RA-18CTD	RA-18HTD	RA-18 CD	RA-18C/SMT	RA-18CL	RA-18SDG
STACKABLE	✓	✓	✓	✓	✓	✓	✓	✓	✓
CUSTOMIZABLE	✓	✓	✓	✓	✓	✓	✓	✓	✓
WORKS PCB STORAGE	✓	✓	✓	✓	✓	✓	✓	✓	✓
CARRYING HANDLE	✓	✓	✓	✓	✓	✓	✓	✓	✓
ESD SAFE	✓	✓	✓	✓	✓	✓	✓	✓	✓
DOUBLE WIDE AVAILABLE	✓	✓	✓	✓	✓	✓	✓	✓	✓
CLEAN ROOM AVAILABLE	✗	✗	✗	✗	✗	✗	✓	✓	✗
HIGH TEMP RATED	✗	✓	✓	✓	✓	✗	✗	✗	✗
MAX TEMPERATURE	185F	275F	275F	275F	275F	185F	163F	163F	163F
MAX PCB SIZE (W")	Single Wide 8"	Single Wide 8"	Single Wide 8"	Single Wide 24"	Single Wide 24"	Single Wide 24"	Single Wide 8"	Single Wide 8"	Single Wide 8"
MIN PCB SIZE	Single Wide 2"	Single Wide 2"	Single Wide 2"	Single Wide 2"	Single Wide 2"	Single Wide 2"	Single Wide 2"	Single Wide 2"	Single Wide 2"
AMOUNT OF SLOTS	25 SLOTS	25 SLOTS	25 SLOTS	25 SLOTS	25 SLOTS	25 SLOTS	25 SLOTS	25 SLOTS	25 SLOTS
AVAILABLE COLOR	●	●	●	●	●	●	●	●	●



RA-18C/SMT

This rack has been deigned to solve a growing industry problem which is holding circuit boards with parts closer to the edge than conventional carriers can handle. The rack is light, economical, yet ruggedly designed with cross ribbing to maintain flatness.

Dimensions 6" x 18", weights 0.5 lb. 25 slots with parallel sides for more rigid holding, 0.125" x 0.300 on a 0.625" pitch. High temperature conductive model for bare board processing tolerates acids, alkaline and solvents. Tolerates (163°F) ESD-SAFE



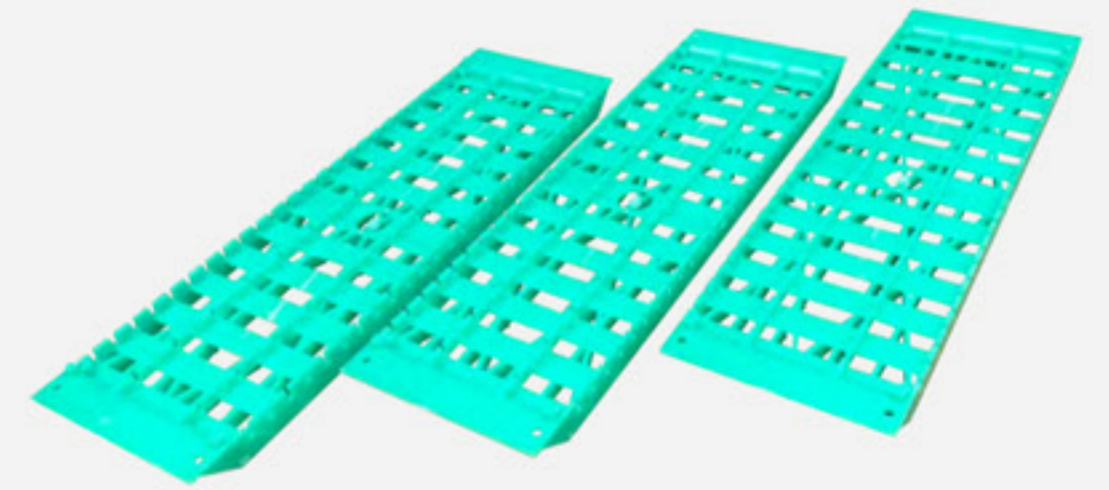
Blue For those boards with components near the edge; slot size .075" x .125" on .500" pitch. Clean Room material and Static-Dissipative



RA-20

Our largest universal rack available. 20 Slots with easy-to-load angle(.125" W x .325" D on a .750" pitch) Measures 7" x 20", weighs 2 lbs. Open carrying handles and stackable. Tolerates (185°F). ESD SAFE

Molded in tough, reinforced, conductive material that meets Mil-Spec #B-81705-B for static discharge.



RA-18SDG

Dimensions 6" x 18", weights 0.5 lb. 25 slots with parallel sides for more rigid holding, 0.125" x 0.300 on a 0.625" pitch. High temperature conductive model for bare board processing tolerates acids, alkaline and solvents. ESD-SAFE

Made with Stat-Rite®X-5356Green RA-18SDG Green static dissipative material for lead-free boards (163°F) Ultra-clean: low off-gassing, low ionic contamination. Humidity insensitive



RA-24

Requires no adjustment for handling clinched, soldered, or bare board of almost any size. Molded-in tough, reinforced, conductive material that meets Mil-Spec #B- 81705-B for static discharge. 20 Slots with easy-to-load angle (.125" W x .325" D on a 1" pitch). Measures 8.375" x 23"

Open carrying handles and stackable. Extremely rigid and flat because of extensive ribbing that is built into the mold. This helps to maintain stability when transporting or sitting on a bench or cart. It is injection molded in a reinforced polymer that can tolerate temperatures up to (220°F)

This material is conductive and provides ESD protection for the boards with a volume resistivity is 101-103ohm-cm, and surface resistivity if 104-106ohms/sq. ESD SAFE





PCBH-C SINGLE WIDE ANGLE RACKS

Universal angled model, designed for the manufacture, assembly, storage and transport of PCB Boards.

Features

Economical Rack with ESD Protection with no adjustment required for handling clinched, soldered, or bare boards. Standard Angled-Racks are molded in tough, reinforced, conductive material that meets Mil-Spec #B-81705-B for static discharge. Can hold boards on two contiguous edges. Max PCB Size 14" wide
 Dimensions 10" W x 8" L x 4" H. Surface resistivity of 10-4 to 10-6 ohm/cm. 25 Slots with easy-to-load angle, 0.125" W x 0.200" D. Drainage holes for use in cleaners
 Tolerates (185°F). ESD SAFE



PCBH-2L-C DOUBLE WIDE ANGLE RACKS

Universal angled model, designed for the manufacture, assembly, storage and transport of PCB Boards.

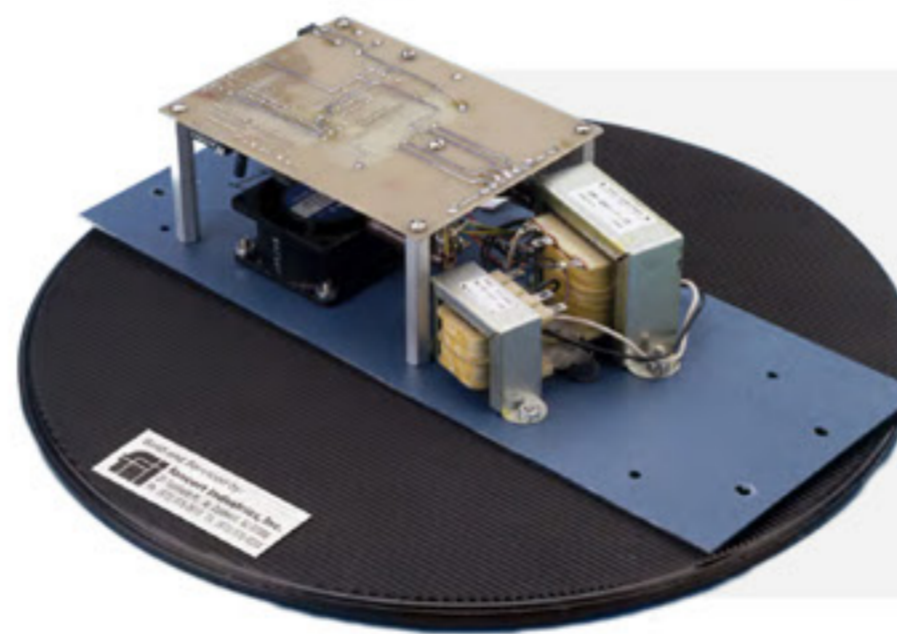
Features

Economical Rack with ESD Protection with no adjustment required for handling clinched, soldered, or bare boards. Standard Angled-Racks are molded in tough, reinforced, conductive material that meets Mil-Spec #B-81705-B for static discharge. Can hold boards on two contiguous edges. Max PCB Size 18" wide
 Dimensions 14" W x 10" L x 5" H. Surface resistivity of 10-4 to 10-6 ohm/cm. 25 Slots with easy-to-load angle, 0.100" W x 0.1875" D. Drainage holes for use in cleaners
 Tolerates (185°F). ESD SAFE



ESD Turntable

The ESD Turntable eliminates electro static build-up, it is especially suitable for use in the field of electronics and when working with electrical objects.



Common Applications

- Electronic Production
- Mechanical Production
- Computer Assembly
- Office and home environments

D300

300mm Flat Diameter x 2 mm H
 Weight capacity of 150 lbs for D300



D380

380mm Flat Diameter x 12 mm H
 Weight capacity of 200 lbs for D380

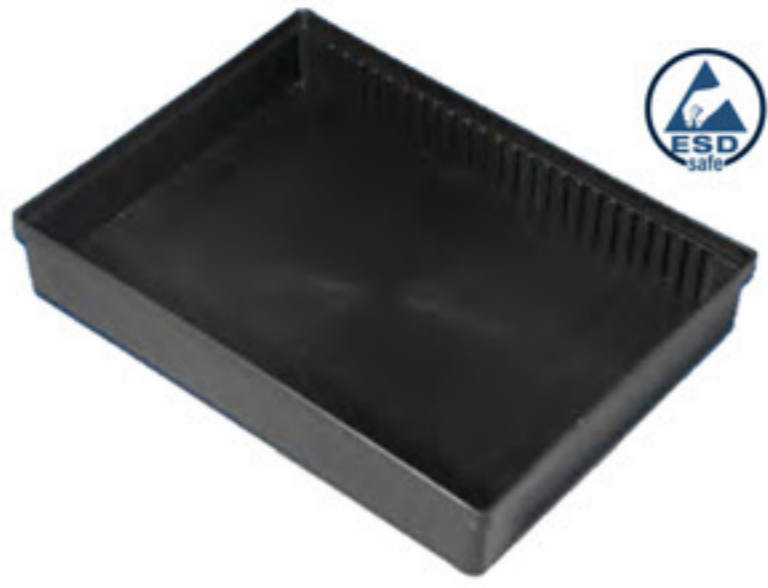


D500

500mm Flat Diameter x 15 mm H
 Weight capacity of 250 lbs for D500



Work on heavy or awkward mechanical assemblies. Ideal for assembly or re-work. ESD safe for use with electrical assemblies. Surface material is conductive rubber; disc material is durable plastic. Surface resistivity of 5 x 10e6. Volume resistivity in Ω: 1x10e7. Performance Range in Ω/cm2: 5x10e6. 360 degrees rotation. Tolerates (185°F)



MS-Q11

Rectangular trays in various sizes for storing and transporting assemblies. The MS-Q11.1 has slots molded on the 9" dimension for dividers. The other sizes have no slots but custom partitions are available to create the interior size you require. The partitions are removable, plastic coated corrugated with ESD protection.



MS-Q12

The MS-Q12 model is solid, resistant and stackable, its external dimensions are 18.4" x 12.52" x 1.6", it has an optional removable divider with 70 cells.

Store and ship components and assemblies in these economical, stackable, rugged reinforced trays molded in 0.085" thick ESD safe plastic with surface resistivity below 10 (to the 6th power)Ω and temperature tolerance to 140F. Rectangular trays in different sizes for storage and product transportation. Plastic coated corrugated with ESD protection dividers. Three trays with permanently molded partitions to create cavities 10 fixed cells and three size options.

PART NUMBER	OUTSIDE DIMENSIONS	INSIDE DIMENSIONS	ESD-SAFE	MAX TEMP	REMOVABLE DIVIDER	STACKABLE
MS-Q11.1	8.75" x 6.5" x 1.5"	8.5" x 6.125" x 1.25" with slots	✓	140F	✓	✓
MS-Q11.2	12.375" x 8.75" x 1.6"	11.75" x 8.375" x 1.375"	✓	140F	✓	✓
MS-Q11.3	14.75" x 12.25" x 1.12"	14.125" x 11.5" x .875"	✓	140F	✓	✓
MS-Q11.4	17.63" x 11.5" x 2.75"	17" x 11" x 2.375"	✓	140F	✓	✓
MS-Q11.5	17" x 13" x 2.75"	16.375" x 12.5" x 2.25"	✓	140F	✓	✓
MS-Q11.6	22" x 14.625" x 3"	20.75" x 13.5" x 2.75"	✓	140F	✓	✓
MS-Q12	18.4" x 12.52" x 1.6"	16.5" x 11.5" x 1.16" Removable grid creates 70x 1.50" x 1.50" cells	✓	140F	✓	✓
MS-Q13	13.6" x 4.92" x 2.00"	11.625" x 4.4" x 1.84" 4 slots to insert dividers to create cavities 2-7/8" or 3-3/4" in length	✓	140F	✓	✓
MS-Q14.1	13-1/4" x 13-3/4" x 1-5/8"	6-5/8" x 2-1/2" x 1-3/8" Permanently molded partitions to create cavities for your assemblies	✓	140F	✗	✓
MS-Q14.2	12-1/2" x 11-1/2" x 1-3/4"	5-3/8" x 2-1/4" x 1-1/2" Permanently molded partitions to create cavities for your assemblies	✓	140F	✗	✓
MS-Q14.3	11-3/8" x 12-3/8" x 1"	5-3/8" x 2-1/4" x 1/2" Permanently molded partitions to create cavities for your assemblies	✓	140F	✗	✓



MS-Q13

Single cavity with slots for dividers to create cavities 2-7/8" or 3-3/4" x 4.52". Lip on front and back for hanging on a rack.

Four slots for dividers to create cavities 2-7/8" or 3-3/4" in length

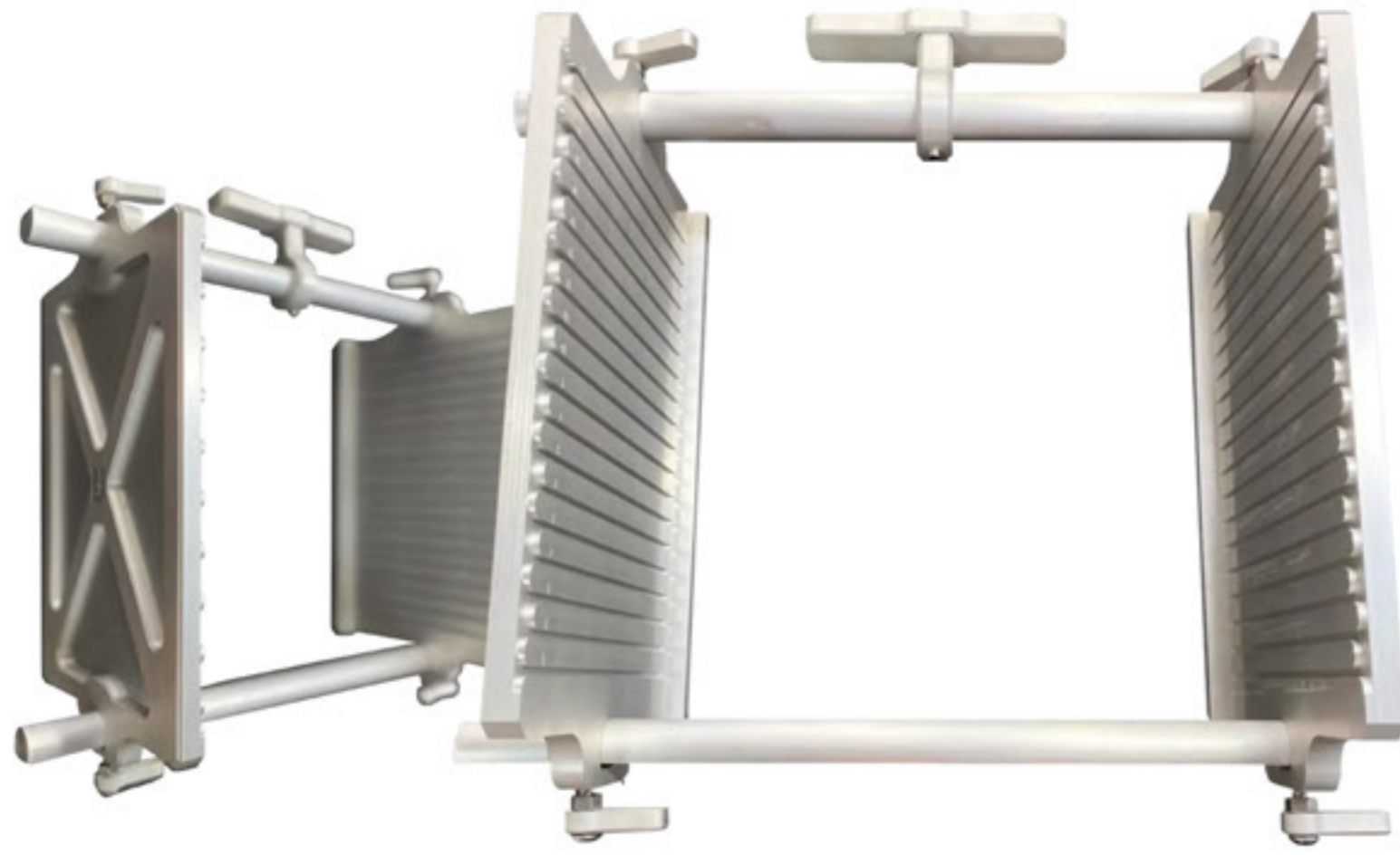


MS-Q14

The MS-Q14 model is solid and resistant, its external dimensions are: 11-3 / 8"x 12-3 / 8" x 1" to 13-1 / 4" x 13-3 / 4" x 1-5 / 8 "

Three trays with permanently molded partitions to create cavities for your assemblies 10 fixed cells and three size options.

Store and ship components and assemblies in these economical, stackable, rugged reinforced trays molded in 0.085" thick ESD safe plastic with surface resistivity below 10 (to the 6th power)Ω and temperature tolerance to 140F. Rectangular trays in different sizes for storage and product transportation. Plastic coated corrugated with ESD protection dividers. Three trays with permanently molded partitions to create cavities for your assemblies 10 fixed cells and three size options.



Custom PCB Racks

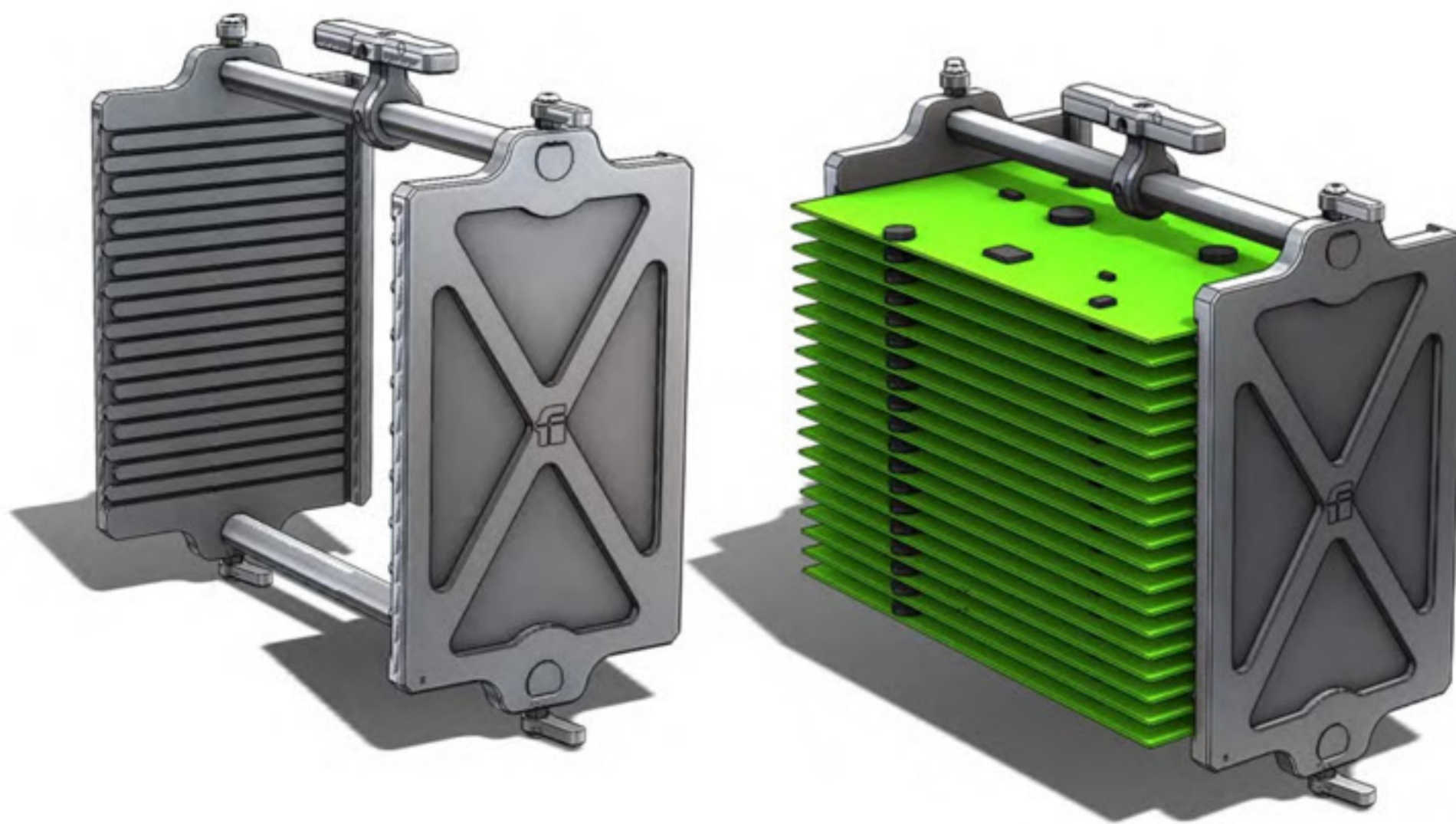
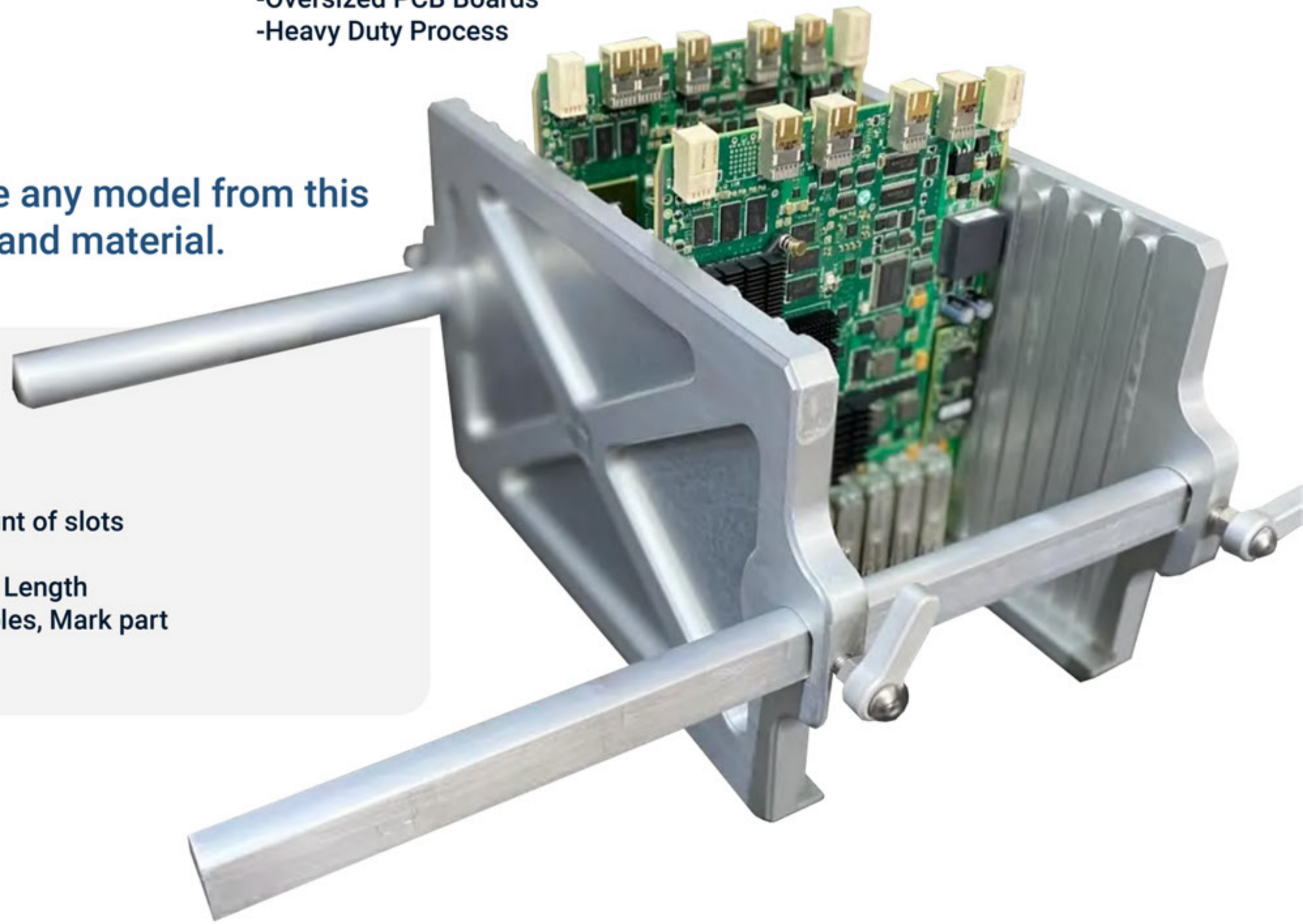
If you have been looking for a solution for your application and have not found anything in the market yet, is because you need our custom solutions.

When your application demands:

- High temperature
- High Accuracy Handling
- Oversized PCB Boards
- Heavy Duty Process

We can customize any model from this catalogue in size and material.

- Aluminum
- Stainless Steel
- Delrin
- Nylamid
- Add or remove the amount of slots
- Change slot size
- Change Height, Width or Length
- Add Numbered Slots, Holes, Mark part numbers and more



Typical Lead times
Proposal: ~24 Hours
Design: ~36 Hours
Fabrication: ~ 2-4 Weeks



fancort industries, inc.

CONTACT INFORMATION

Eddison Preciado
Applications Engineer
eddisson@fancort.com
Call/Text (916) 317 -6077
1.888.FANCORT

©2020 Fancort Industries, Inc. 31 Fairfield Place, West Caldwell, NJ 07006 USA

www.fancort.com

