



For 40 years, PROVERTHA is a successful manufacturer for safe data and signal transfer in complex networks.

**PROVERTHA**<sup>®</sup>  
CONNECTORS, CABLES & SOLUTIONS

**FITTING YOUR APPLICATION**



# Company Facts

PROVERTHA

## Tradition combined with innovation.

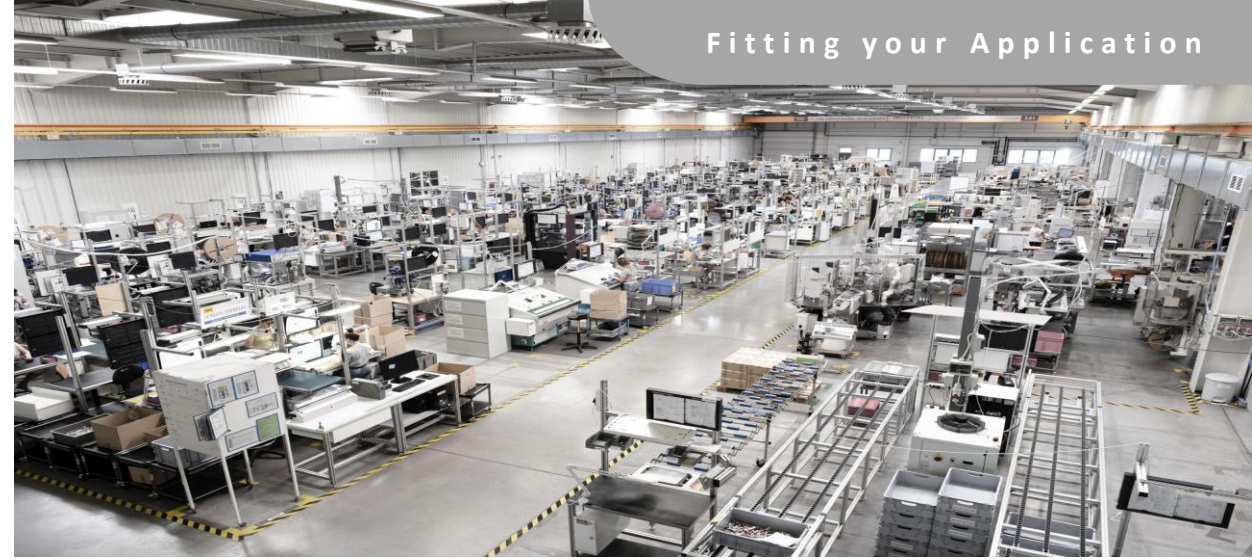
- Family owned and run companies
- A total of 850 employees
- Location Germany (Head office) - GmbH - Foundation 1981
- Locations Hungary - ZRT (closed joint stock company)
  - Beled (connector manufacturing): 2,300 m<sup>2</sup> - since 1986
  - Sárvár (Contract manufacturing): 5.500 m<sup>2</sup> - since 1996
  - Kapuvár (Cable assembly manufacture): 5.300 m<sup>2</sup> - since 2003
  - Kapuvár (Plating facility): 4.700 m<sup>2</sup> - since 2020



# Turnover 2023

## Approx. 43 Mio. Euro

Company

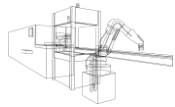


Fitting your Application



**Automotive**

**50%**



**Industrial automation**

**40%**



**Railway / Medical technology /  
Aerospace**

**10%**

For the perfect workflow.

# Locations and subsidiaries



# Head Office

## Pforzheim, Germany

PROVERTHA

- Opened in 1981
- Approx. 35 employees
- Owners/GMs + Sales & Engineering/R&D



# Production plant

## Beled

PROVERTHA

- Opened in 1986 - NEW plant opened in 2019
- Approx. 95 employees
- Approx. 2300m2 Area
- Connector manufacture



# Production plant

## Sárvár

PROVERTHA

- Opened in 1996
- Approx. 260 employees
- Approx. 5500m2 Area
- Contract manufacturing, plastic moulding & tool shop.



# Production plant

## Kapuvár

PROVERTHA

- Opened in 2003
- Approx. 410 employees
- Approx. 5300m<sup>2</sup> Area
- Cable assemblies

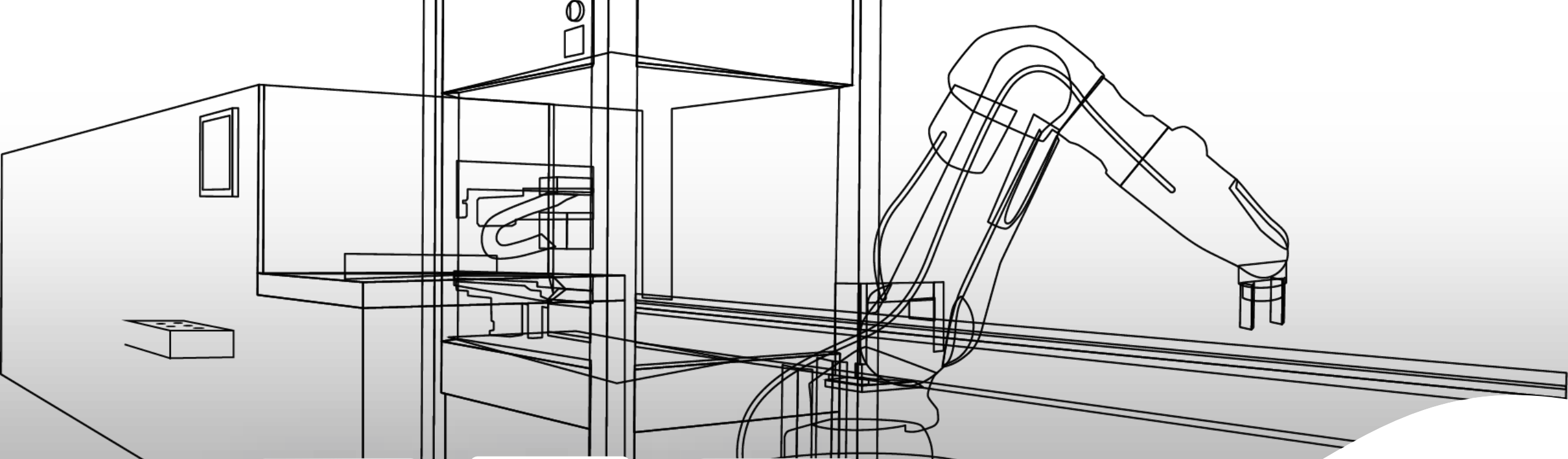




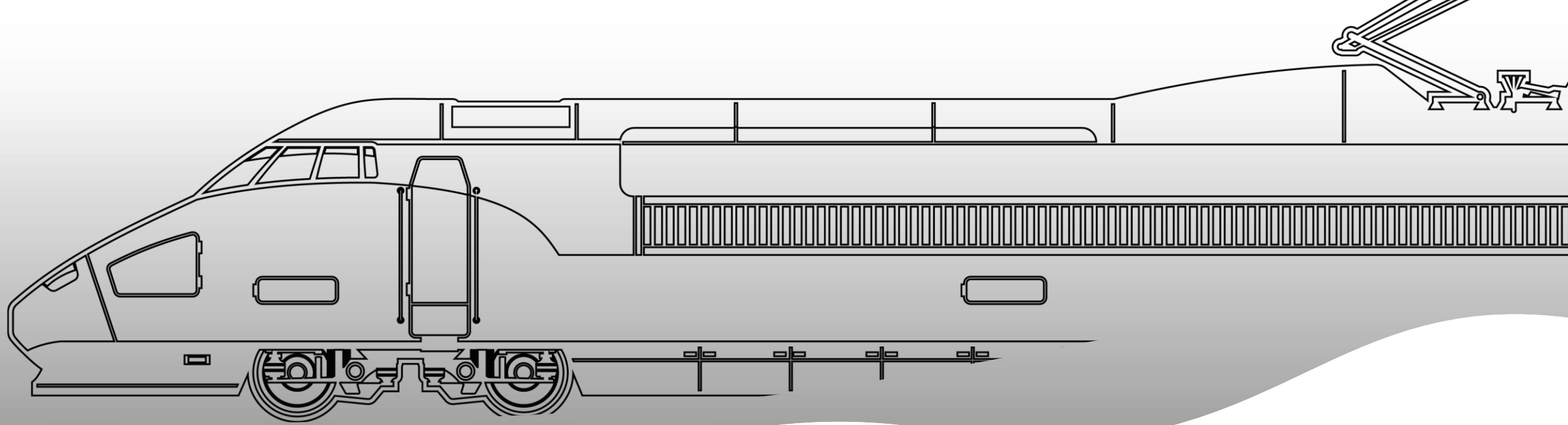
# Fields of application

---

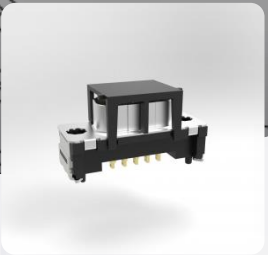
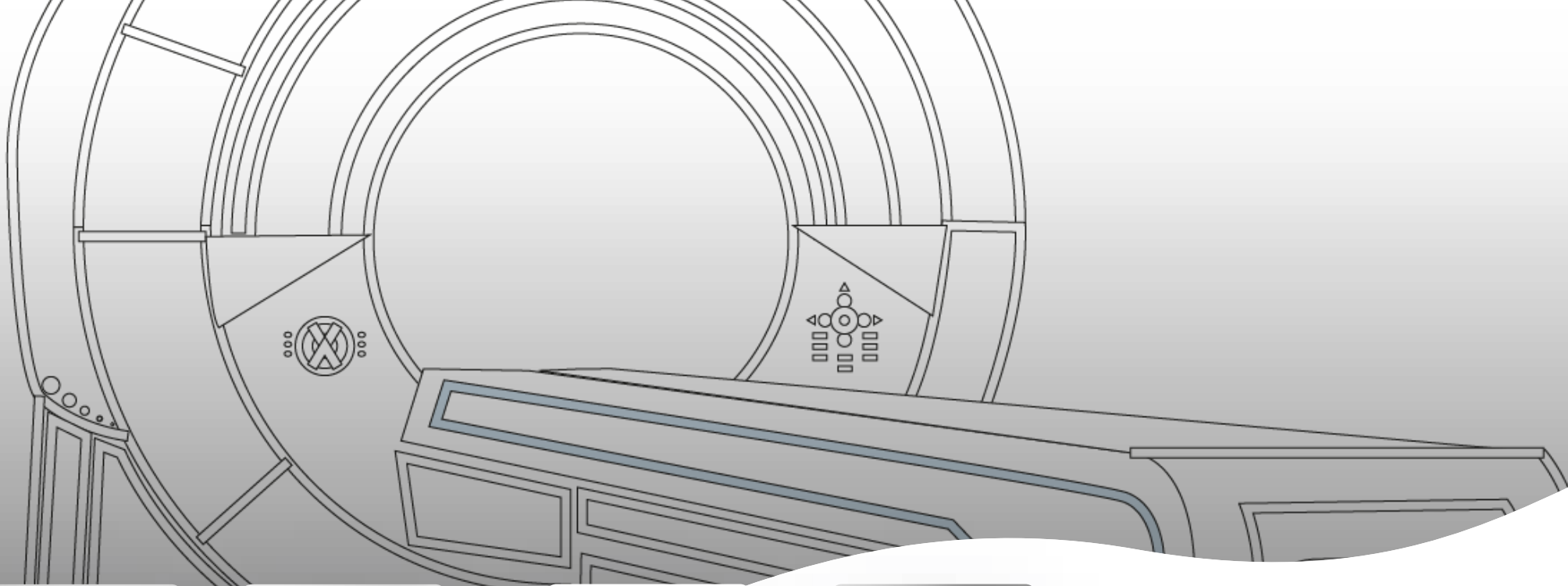
PROVERTHA



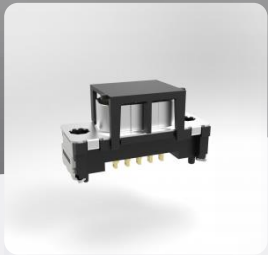
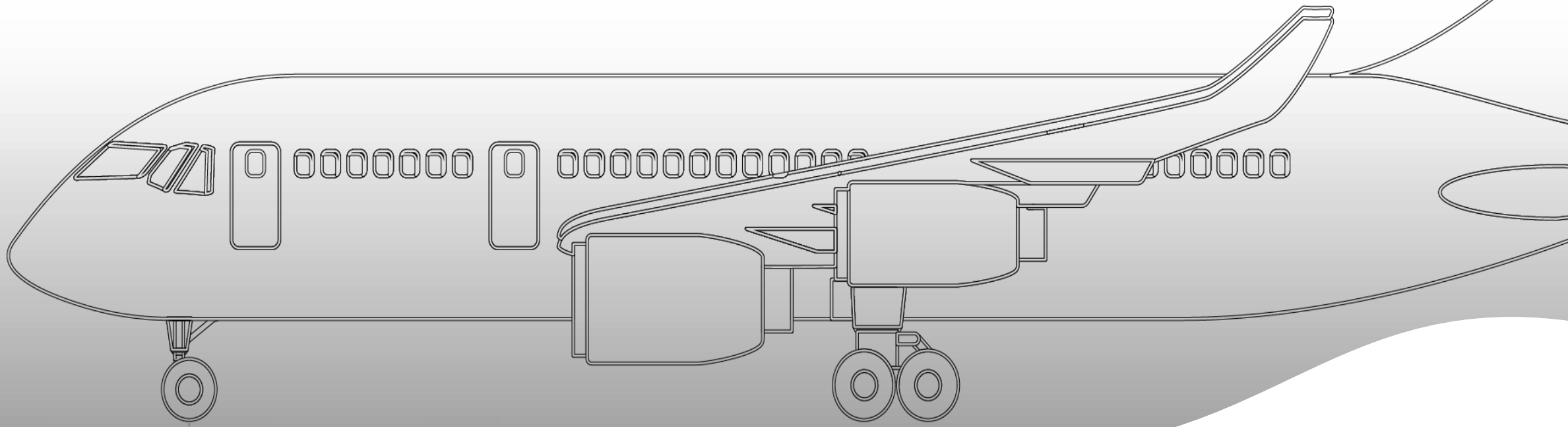
# Industrial Automation



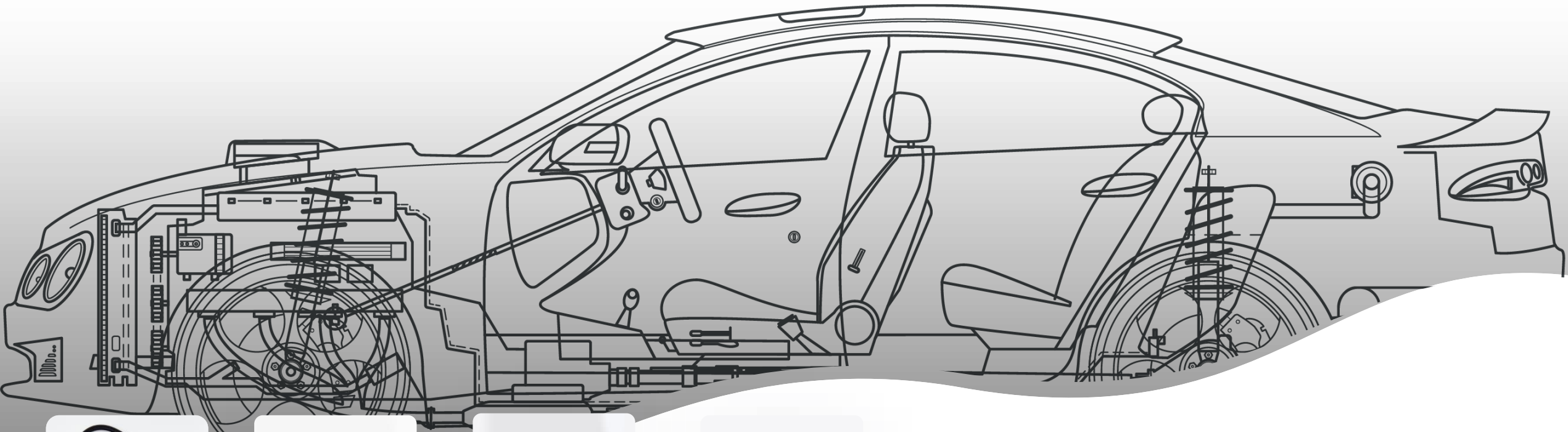
# Railway Solutions



# Medical Solutions



# **Aerospace** Solutions



**Automotive**  
Solutions

# Products

---

PROVERTHA

- **M12 connectors (cable mount + PCB indirect)**
- **M8 connectors (cable mount)**
- **D-sub connectors (Cable + PCB mount)**
- **D-sub hoods - standard (die cast, metallized plastic & plastic)**
- **D-Sub hoods – quick lock (die cast, metallized plastic & plastic)**
- **D-sub accessories**
- **BUS connectors**
- **Distribution boxes**
- **M12 Splitter**
- **Cable assemblies**
- **Wire clip technology (board to board or board to connector)**

# M12 connectors (cable mount + PCB indirect)

PROVERTHA



M12 Cable Connectors for field assembly

360° EMI/RFI shielding, torsion and vibration proof cable strain relief with our crimp flange technology or cable gland (MINI) and machined crimp contacts

Straight and 90° versions

Bulkhead and panel mount

All products are rail specification conform (EN 45545-2 etc.) and IP67

All connectors also available in stainless steel

- A-code (5 pole)
- A-code (8 pole)
- B-code (5 pole)
- D-code (4 pole)
- X-code (8 pole) 10 Gbit Hi-Speed Ethernet
- T and Y splitters
- Gender changers (180°)
- Adapters (90°)
- Protection conduit connections
- Specials on request
- Complete M12 cable assemblies



# M8 connectors (cable mount)

PROVERTHA



## M8 Cable Connectors for field assembly

**360° EMI/RFI shielding, torsion and vibration proof cable strain relief with our crimp flange technology or cable gland and machined crimp contacts**

- **A-code (3 pole)**
- **A-code (4 pole)**
- **D-code (4 pole)**
- **Others on request**

# D-sub connectors (Cable + PCB mount)

PROVERTHA



High quality D-sub connectors for rugged environments.

With machined contacts (G1 and G2 levels)

Straight and 90°

- **CRIMP** connectors
- **SOLDER** pot connectors
- **IDC (double contact)** connectors
- **POWER & mixed layout** connectors
- **FILTER** connectors
- **PRESS FIT** connectors
- **THT** connectors
- **THR** connectors
- **SPECIAL 600V 20A (4 pole)**
- **SPECIALS** on request

# D-sub hoods (die cast, metallized plastic, plastic)

PROVERTHA



The right hood for every application (over 20 different hood systems)

With extensive range of accessories

3 different cable fixing solutions (crimp flange, external cable clamps and internal cable clamps)

360° EMI/RFI shielding (depending on hood and accessory selection)

1,2 & 3 cable exits (180°, 90° & 45°)

Die cast hoods with “captive” screws

Different locking systems (Allen screws & spring washer, thumb screws, push-pull, sliding locks)

- Die cast (full metal) hoods (also nickel plated versions FlexLock)
- Metallized plastic hoods
- Plastic hoods
- Special “quick lock” hoods
- Modular hood system
- Adapter hoods
- BUS hoods

# D-sub accessories

we offer a wide range of accessories with components for various locking systems

PROVERTHA



- Allen screws (normally in combination with spring washers)
- Large range of thumb screws (different lengths) (UNC4-40 & M3)
- Push-pull locking pins
- Protection caps (metal and plastic)
- Sealing flanges (RF or silicon)

# BUS connectors

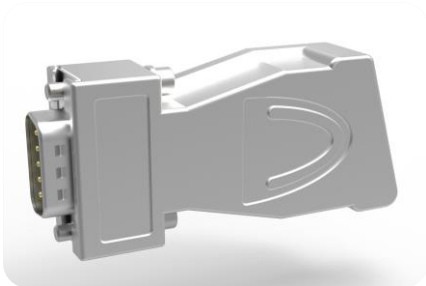
PROVERTHA

We offer a full range of BUS connectors

With different cable assembly technologies (M12, crimp flanges, external cable clamps and internal cable clamps)

360° EMI/RFI shielding, torsion and vibration proof cable strain relief

- MVB
- WTB
- PROFIBUS
- CANBUS
- UNIVERSAL BUS



# Distribution boxes

PROVERTHA



**M12 Distribution boxes**

**360° EMI/RFI shielding**

**Shock and vibration proof**

**IP 67 (when potted)**

- **A-code (5 pole)**
- **A-code (8 pole)**
- **B-code (5 pole)**
- **D-code (4 pole)**
- **As single parts or as assembled and tested box**

**D-sub Distribution boxes/connectors according to customers specifications**

# M12 Splitter

PROVERTHA



**M12 Splitters – compact and robust**

**360° EMI/RFI shielding**

**Shock and vibration proof**

**IP 67 (when potted)**

- **A-code (5 pole)**
- **A-code (8 pole)**
- **B-code (5 pole)**
- **D-code (4 pole)**
- **Different combinations according to our partners requirements**
- **Single parts or as assembled and tested splitter**
- **As complete cable assembly (e.g. jumper cable)**

# Cable assemblies

PROVERTHA



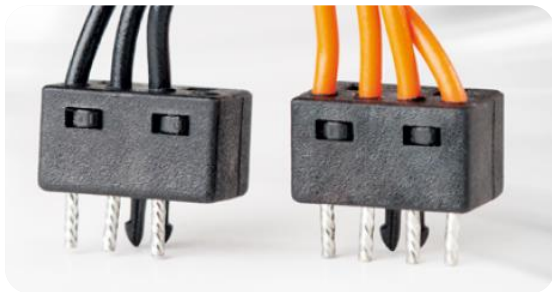
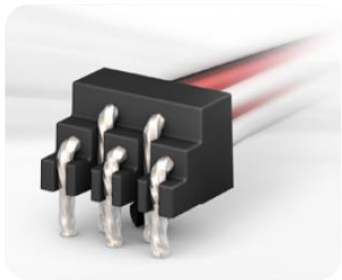
We manufacture individual data cable assemblies and harnesses to a high professional standard and according to our partners specifications and requirements.

- Automatic single wire production (Komax)
- Jacket cable cutting & stripping (Schleuniger)
- Contact crimping technology with 100% crimp quality control
- Crimp validation laboratory
- Soldering technology also using robots
- Over moulding solutions
- Cable assembly connections potting as required
- Production machines for battery cables or power single core with cable lugs
- 100% final testing & eye of the customer control



# Wire clip technology

PROVERTHA



**Secure and fast assembly of wires (board to board or board to connector)**

**No contacts required**

**Snap in and location clip to PCB**

**Low profile/space saving**

- **Single row (2, 4 and 6 pole as standard)**
- **2-row (3, 5, 7 and 9 pole as standard)**
- **Different AWG wires (18 to 26)**
- **Mixed layouts according to partners requirements**
- **90° and straight versions**
- **Standard and low profile solutions**
- **Special customized solution on request**



**PROVERTHA**<sup>®</sup> | FITTING **YOUR**  
CONNECTORS, CABLES & SOLUTIONS | APPLICATION

**Paul O' Mahony**

International Sales & Marketing Manager

Tel.: 0049 170 852 45 32 (mobile)

E-Mail: [paul.omahony@provertha.com](mailto:paul.omahony@provertha.com)

[www.provertha.com](http://www.provertha.com)

2024

**PROVERTHA**<sup>®</sup>  
CONNECTORS, CABLES & SOLUTIONS

FITTING **YOUR**  
APPLICATION