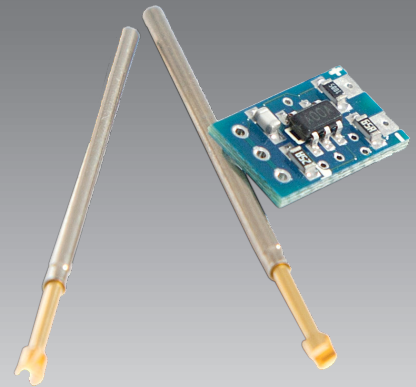
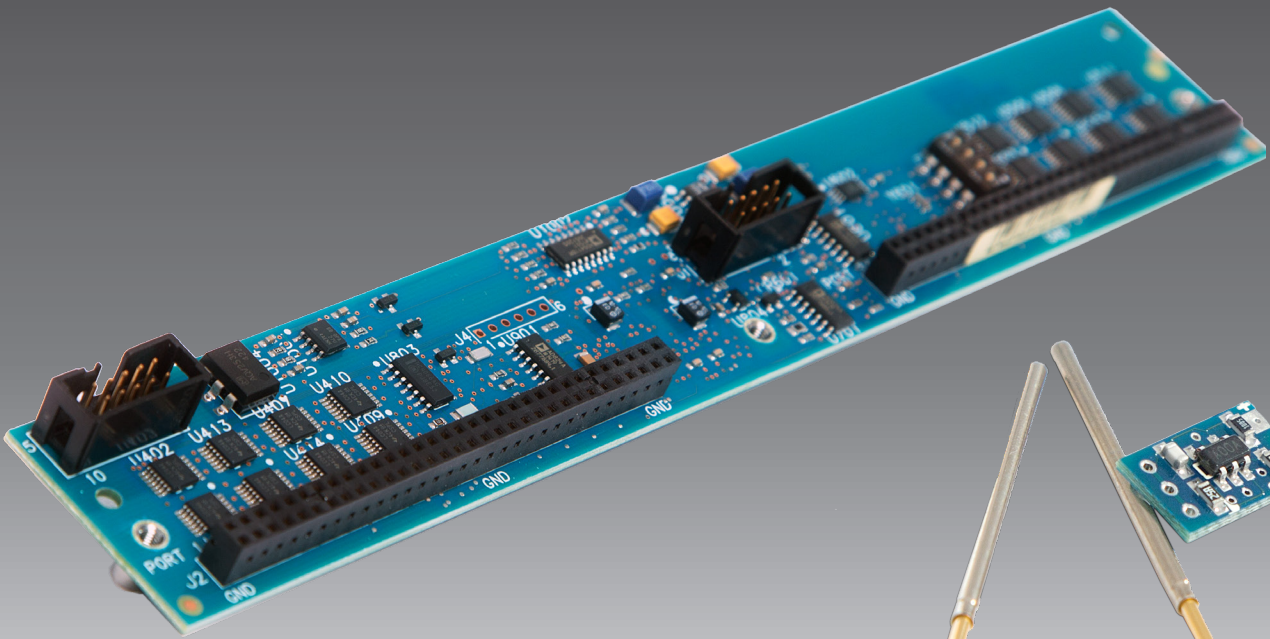
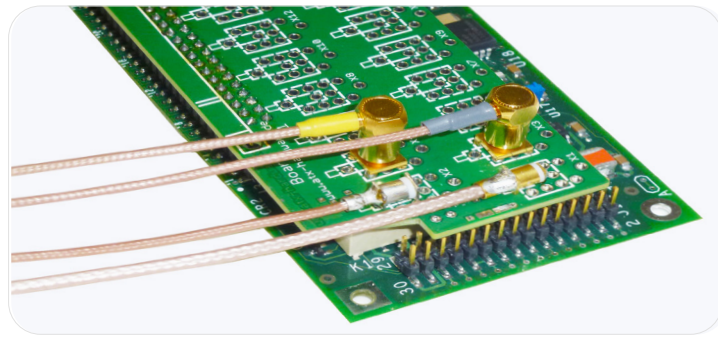


# CAPACITIVE PROBES



SPECIALIST FIXTURE SOLUTIONS

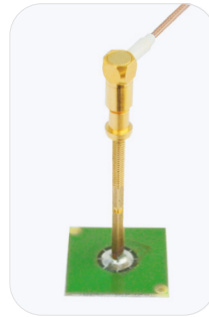
## ATX PROBES



For using all passive systems the ATX coax probes are the best choice. They are suitable for test systems that do not require an amplifier between the Multiplexer board and the probe. For example OFM, digital test, Areoflex and others. The shielded probes significantly improve signal quality and are mechanically much more robust than the classic strut probe. These are secured with a twist.

### Cable probes

Order number	Designation
560003	Sonde S1 Ø4 L=45mm
560004	Sonde S1 Ø4 L=52mm
560012	Sonde S1 Ø8 L=40mm
560011	Sonde S1 Ø8 L=60mm
560006	Sonde S2 Ø4 L=52mm
560014	Sonde S2 Ø8 L=40mm
560013	Sonde S2 Ø8 L=60mm
560016	Sonde S3 Ø8 L=40mm
560015	Sonde S3 Ø8 L=60mm



### SMB Connector probes

Order number	Designation
560034	Probe S1 Ø4 L=45mm/25x25mm
560035	Probe S1 Ø4 L=52mm/25x25mm
560026	Probe S1 Ø8 L=45mm/25x25mm
560027	Probe S1 Ø8 L=65mm/25x25mm
560036	Probe S2 Ø4 L=45mm/45x45mm
560037	Probe S2 Ø4 L=52mm/45x45mm
560028	Probe S2 Ø8 L=45mm/45x45mm
560029	Probe S3 Ø8 L=65mm/45x45mm
560038	Probe S3 Ø4 L=45mm/16x80mm

### probes connector cable

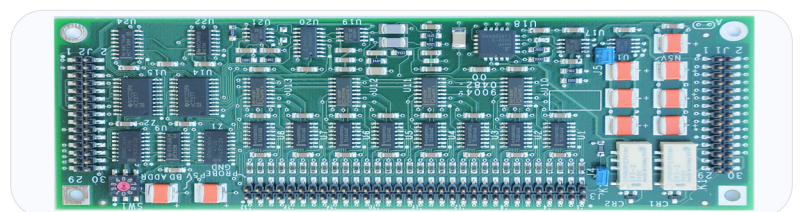
Order number	Designation
561062	ATX-Probe cable 5cm
561063	ATX-Probe cable 7cm
561064	ATX-Probe cable 9cm
561065	ATX-Probe cable 11cm
561066	ATX-Probe cable 13cm
561067	ATX-Probe cable 15cm
561068	ATX-Probe cable 17cm
561069	ATX-Probe cable 19cm
561074	ATX-Probe cable 20cm
561070	ATX-Probe cable 21cm

Order number	Designation
561071	ATX-Probe cable 23cm
561072	ATX-Probe cable 25cm
561073	ATX-Probe cable 27cm
561075	ATX-Probe cable 31cm
561076	ATX-Probe cable 33cm
561077	ATX-Probe cable 35cm
561078	ATX-Probe cable 37cm
561079	ATX-Probe cable 39cm
561080	ATX-Probe cable 41cm
561081	ATX-Probe cable 43cm

## TERADYNE/GENRAD 8X

### OPEN EXPRESS

Order number	Designation
564002	OFM-Board für Teradyne
566001	Probes connector board
561045	SMB extension connector
691003	Coax connection RG174
691002	Coax connection RG178

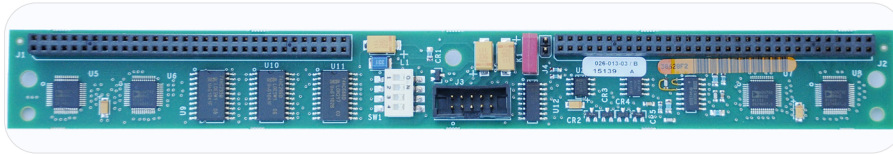


# TERADYNE

## FRAMESCAN FX

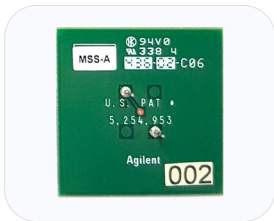
### Muxboard

Order number	Designation
564008	Frame Scan II Selector Board PCA



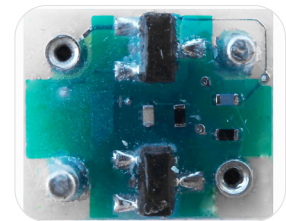
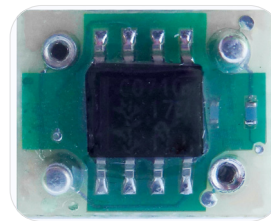
### Sensor Plate

Order number	Designation
562008	TestJet Sensor Plate 31,5x31,5mm E3853B-FG
562009	TestJet Sensor Plate 63,3x63,3mm E3854B-FG
562007	TestJet Sensor Plate 12,7x155mm E3964A-FG



### Amplifier

Order number	Designation
283122	FRAMESCAN FX Amplifier 093-284-00

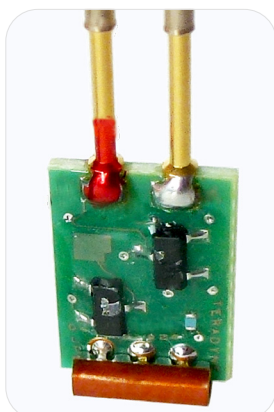


### Probes Sets (Amplifier+Hängerprobes+Sensor Plate)

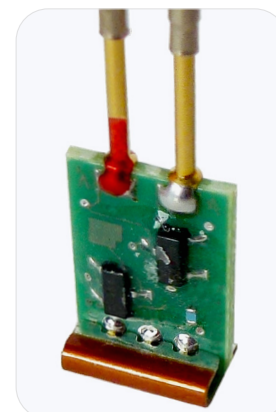
Order number	Designation
103429	Teradyne Probe installed incl. Sensor Plate / 31,5 x 31,5mm
103430	Teradyne Probe installed incl. Sensor Plate / 63,3 x 63,3mm
103431	Teradyne Probe installed incl. Sensor Plate / 12,5 x 152mm

### C-Test Probes with Amplifier

Order number	Designation
565014	Framescan FX Probe Vertical small polarity check



Order number	Designation
565013	Framescan FX Probe Vertical large polarity check

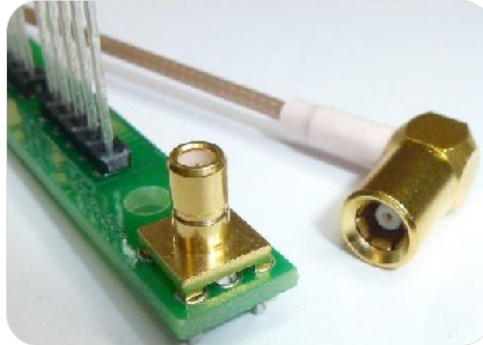


# DIGITALTEST

## OPENS CHECK BUFFER

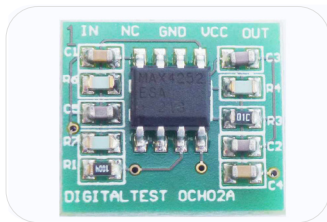
in Kombination mit ATX Sonden

Order number	Designation
567011	Affiliation plate

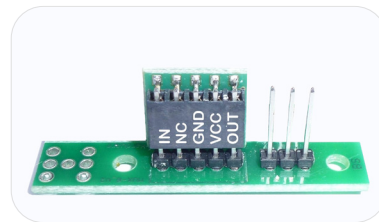


## Amplifier

Order number	Designation
565003	Opens-Check-Buffer OCH o2 13,2 x 14,5mm



Order number	Designation
103304	Opens-Test-Set (composed of Opens-Check-Buffer, additional board, coax cable, SMB extension connector)



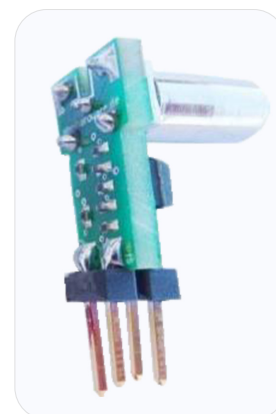
## SPEA E-SCAN

in combination with ATX Probes

Order number	Designation
221305	probe multiplier vertical



Order number	Designation
221304	probe multiplier horizontal



# KEYSIGHT

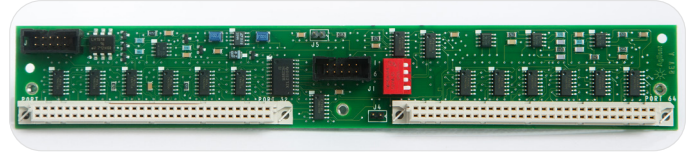
## TESTJET

### Muxboard

Order number	Designation
564003	Signal Conditioner Board (TestJet) E3849A

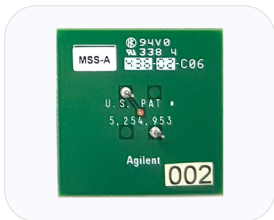


Order number	Designation
564004	Signal Conditioner Board (TestJet) E3969A-FG



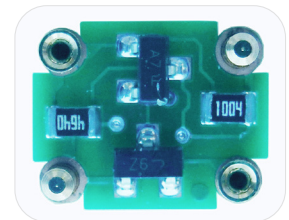
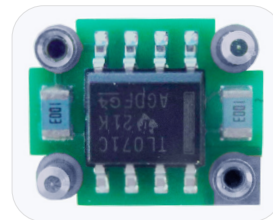
### Sensor Plate

Order number	Designation
562008	TestJet Sensor Plate 31.5x31.5mm E3853B-FG
562009	TestJet Sensor Plate 63.3x63.3mm E3854B-FG
562007	TestJet Sensor Plate 12.7x15.5mm E3964A-FG



### Amplifier

Order number	Designation
565001	Amplifier Board TestJet E3850A-FG

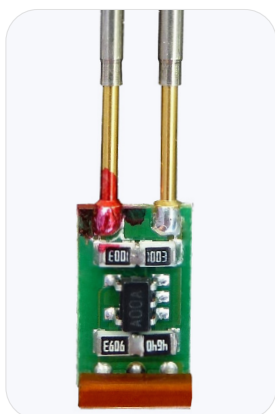


### Probes Sets (Amplifier+Hängerprobes+Sensor Plate)

Order number	Designation
103426	TestJest Probe installed incl. Sensor Plate / 31,5 x 31,5mm
103427	TestJest Probe installed incl. Sensor Plate / 63,5 x 63,5mm
103428	TestJest Probe installed incl. Sensor Plate/ 12,7 x 15,5mm

### C-Test Probes with Amplifier

Order number	Designation
565002	TestJet Probe Vertical small polarity check



Order number	Designation
562001	TestJest Probe Vertical large polarity check Set



## Contact us

Would you like to learn more about us or talk to one of our experts about your new project? Please feel free to inform yourself about our website or give us a call:

[www.atx-hardware.de](http://www.atx-hardware.de) ▶ Contact

**We are committed to finding the optimum technical solution for you. Test us!**

### **ATX Hardware GmbH West Subsidiary of ATX Hardware GmbH**

#### **Pürgen branch**

Am Kornfeld 8  
86932 Pürgen, Deutschland/Germany

Phone: +49 81 96 / 93 04 - 0  
Telefax: +49 81 96 / 93 04 - 19

Email: [projekte@atx-hardware.de](mailto:projekte@atx-hardware.de)  
Web: [www.atx-hardware.de](http://www.atx-hardware.de)

#### **Weil branch**

Carl-Zeiss-Straße 5/1  
71093 Weil im Schönbuch, Deutschland/Germany

Phone: +49 81 96 / 9304 - 345 oder 349  
Telefax: +49 81 96 / 93 04 - 359

Email: [projekte@atx-hardware.de](mailto:projekte@atx-hardware.de)  
Web: [www.atx-hardware.de](http://www.atx-hardware.de)